

For Research Use Only

# CPTP Polyclonal antibody, PBS Only

Catalog Number: 33114-1-PBS



## Basic Information

Catalog Number:

33114-1-PBS

Concentration:

1 mg/ml

Source:

Rabbit

Isotype:

IgG

Immunogen Catalog Number:

AG35748

GenBank Accession Number:

NM\_001029885

GeneID (NCBI):

80772

UNIPROT ID:

Q5TA50

Full Name:

glycolipid transfer protein domain containing 1

Calculated MW:

24 kDa, 214aa

Observed MW:

24 kDa

Purification Method:

Antigen affinity Purification

## Applications

Tested Applications:

WB, Indirect ELISA

Species Specificity:

human

## Background Information

Ceramide-1-phosphate transfer protein (CPTP) is a member of the glycolipid transfer protein (GLTP) family. It is the only identified protein in mammals that can selectively transport ceramide-1-phosphate (C1P) through a non-vesicular mechanism (PMID: 35982909). CPTP plays a crucial role in various biological processes, including cell proliferation, migration, and invasion. It is involved in the regulation of lipid metabolism, particularly in the context of ceramide-1-phosphate, which is a bioactive sphingolipid with roles in cell signaling, inflammation, and autophagy (PMID: 29164996).

## Storage

Storage:

Store at -80°C.

**The product is shipped with ice packs. Upon receipt, store it immediately at -80°C**

Storage Buffer:

PBS only, pH7.3

For technical support and original validation data for this product please contact:

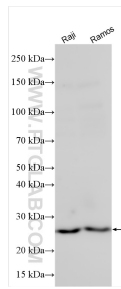
T: 4006900926

E: [Proteintech-CN@ptglab.com](mailto:Proteintech-CN@ptglab.com)

W: [ptgcn.com](http://ptgcn.com)

**This product is exclusively available under Proteintech Group brand and is not available to purchase from any other manufacturer.**

## Selected Validation Data



Various lysates were subjected to SDS PAGE followed by western blot with 33114-1-AP (CPTP antibody) at dilution of 1:800 incubated at room temperature for 1.5 hours. This data was developed using the same antibody clone with 33114-1-PBS in a different storage buffer formulation.