

For Research Use Only

CPTP Polyclonal antibody

Catalog Number: 33114-1-AP



Basic Information

Catalog Number:

33114-1-AP

Concentration:

350 µg/ml

Source:

Rabbit

Isotype:

IgG

Immunogen Catalog Number:

AG35748

GenBank Accession Number:

NM_001029885

GeneID (NCBI):

80772

UNIPROT ID:

Q5TA50

Full Name:

glycolipid transfer protein domain containing 1

Calculated MW:

24 kDa, 214aa

Observed MW:

24 kDa

Purification Method:

Antigen affinity Purification

Recommended Dilutions:

WB 1:500-1:1000

Applications

Tested Applications:

WB, ELISA

Species Specificity:

human

Positive Controls:

WB: Raji cells, Ramos cells

Background Information

Ceramide-1-phosphate transfer protein (CPTP) is a member of the glycolipid transfer protein (GLTP) family. It is the only identified protein in mammals that can selectively transport ceramide-1-phosphate (C1P) through a non-vesicular mechanism (PMID: 35982909). CPTP plays a crucial role in various biological processes, including cell proliferation, migration, and invasion. It is involved in the regulation of lipid metabolism, particularly in the context of ceramide-1-phosphate, which is a bioactive sphingolipid with roles in cell signaling, inflammation, and autophagy (PMID: 29164996).

Storage

Storage:

Store at -20°C. Stable for one year after shipment.

Storage Buffer:

PBS with 0.02% sodium azide and 50% glycerol, pH7.3

Aliquoting is unnecessary for -20°C storage

For technical support and original validation data for this product please contact:

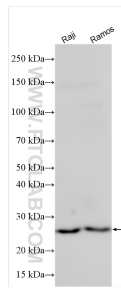
T: 4006900926

E: Proteintech-CN@ptglab.com

W: ptgcn.com

This product is exclusively available under Proteintech Group brand and is not available to purchase from any other manufacturer.

Selected Validation Data



Various lysates were subjected to SDS PAGE followed by western blot with 33114-1-AP (CPTP antibody) at dilution of 1:800 incubated at room temperature for 1.5 hours.