

For Research Use Only

SLC26A9 Polyclonal antibody, PBS Only

Catalog Number: 33108-1-PBS



Basic Information

Catalog Number: 33108-1-PBS	GenBank Accession Number: BC151208	Purification Method: Antigen affinity Purification
Concentration: 1 mg/ml	GeneID (NCBI): 115019	
Source: Rabbit	UNIPROT ID: Q7LBE3	
Isotype: IgG	Full Name: solute carrier family 26, member 9	
Immunogen Catalog Number: AG37313	Calculated MW: 791 aa, 87 kDa	
	Observed MW: 100-115 kDa	

Applications

Tested Applications:
WB, IP, Indirect ELISA

Species Specificity:
human, mouse

Background Information

Solute carrier family 26 member 9 (SLC26A9) is one out of 11 proteins that belong to the SLC26A family of anion transporters. Apart from expression in the gastrointestinal tract, SLC26A9 is also found in the respiratory system, in male tissues and in the skin. SLC26A9 has gained attention because of its modifier role in the gastrointestinal manifestation of cystic fibrosis (CF). SLC26A9 appears to have an impact on the extent of intestinal obstruction caused by meconium ileus. SLC26A9 supports duodenal bicarbonate secretion, but was assumed to provide a basal Cl⁻ secretory pathway in airways. (PMID: 36866602). SLC26A9 was shown to be located at the luminal side of lung bronchiolar and alveolar epithelium (PMID: 11834742).

Storage

Storage:
Store at -80°C.
The product is shipped with ice packs. Upon receipt, store it immediately at -80°C

Storage Buffer:
PBS only, pH7.3

For technical support and original validation data for this product please contact:

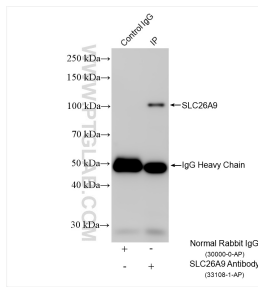
T: 4006900926

E: Proteintech-CN@ptglab.com

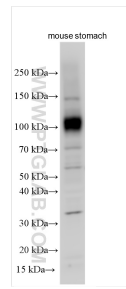
W: ptgcn.com

This product is exclusively available under Proteintech Group brand and is not available to purchase from any other manufacturer.

Selected Validation Data



IP result of anti-SLC26A9 (IP:33108-1-AP, 4ug; Detection:33108-1-AP 1:500) with BxPC-3 cells lysate 1320 ug. This data was developed using the same antibody clone with 33108-1-PBS in a different storage buffer formulation.



Various lysates were subjected to SDS PAGE followed by western blot with 33108-1-AP (SLC26A9 antibody) at dilution of 1:1500 incubated at room temperature for 1.5 hours. This data was developed using the same antibody clone with 33108-1-PBS in a different storage buffer formulation.