

For Research Use Only

Mouse CACHD1 Polyclonal antibody, PBS Only

Catalog Number: 33104-1-PBS



Basic Information

Catalog Number:

33104-1-PBS

Source:

Rabbit

Isotype:

IgG

Immunogen Catalog Number:

EG2855

GenBank Accession Number:

NM_198037.1

GeneID (NCBI):

320508

UNIPROT ID:

Q6PDJ1-1

Full Name:

cache domain containing 1

Calculated MW:

143 kDa

Observed MW:

140-170 kDa

Purification Method:

Antigen affinity Purification

Applications

Tested Applications:

WB, Indirect ELISA

Species Specificity:

mouse, rat

Background Information

CACHD1 (Cache domain-containing protein 1), also called VWCD1 (VWFA and cache domain-containing protein 1), is a type I membrane protein involved that modulates the activities of voltage-gated Ca(2+) channels (VGCCs) (PMID: 30181139; 30404013). CACHD1 has certain glycosylation modifications, resulting in a protein molecular weight of 142-170 kDa (PMID: 30983497; 30404013). This antibody recognizes 142-170 kDa.

Storage

Storage:

Store at -80°C.

The product is shipped with ice packs. Upon receipt, store it immediately at -80°C

Storage Buffer:

PBS only, pH7.3

For technical support and original validation data for this product please contact:

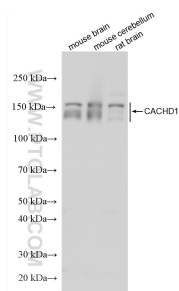
T: 4006900926

E: Proteintech-CN@ptglab.com

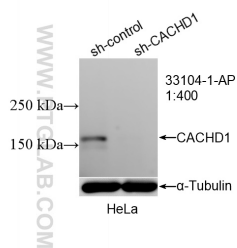
W: ptgcn.com

This product is exclusively available under Proteintech Group brand and is not available to purchase from any other manufacturer.

Selected Validation Data



Various lysates were subjected to SDS PAGE followed by western blot with 33104-1-AP (CACHD1 antibody) at dilution of 1:1000 incubated at room temperature for 1.5 hours. This data was developed using the same antibody clone with 33104-1-PBS in a different storage buffer formulation.



WB result of CACHD1 antibody (33104-1-AP; 1:400; incubated at room temperature for 1.5 hours) with sh-Control and sh-CACHD1 transfected HeLa cells. This data was developed using the same antibody clone with 33104-1-PBS in a different storage buffer formulation.