

For Research Use Only

Alpl Polyclonal antibody

Catalog Number: 33076-1-AP **6 Publications**



Basic Information

Catalog Number: 33076-1-AP	GenBank Accession Number: NM_001287172.1	Purification Method: Antigen affinity Purification
Source: Rabbit	GeneID (NCBI): 11647	Recommended Dilutions: WB: 1:1000-1:8000
Isotype: IgG	UNIPROT ID: P09242	
Immunogen Catalog Number: EG2714	Full Name: alkaline phosphatase, liver/bone/kidney	
	Calculated MW: 58 kDa	
	Observed MW: 70-80 kDa	

Applications

Tested Applications: WB, ELISA	Positive Controls: WB : HeLa cells, mouse kidney tissue, rat kidney tissue
Cited Applications: WB	
Species Specificity: human, mouse, rat	
Cited Species: mouse, rat	

Background Information

There are at least four distinct but related alkaline phosphatases: intestinal, placental, placental-like, and liver/bone/kidney (tissue non-specific). The product of this gene is a membrane bound glycosylated enzyme that is not expressed in any particular tissue and is, therefore, referred to as the tissue-nonspecific form of the enzyme. ALPL (Alkaline phosphatase, tissue-nonspecific isozyme) is also named as AP-TNAP, TNSALP and belongs to the alkaline phosphatase family. It can exist as a homodimer with the molecular weight of 140 kDa (PMID:18724009). ALPL was synthesized as a 66-kDa endo-b-N-acetylglucosaminidase H (Endo H)-sensitive form, and processed to an 80-kDa mature form, which is anchored to the plasma membrane via glycosylphosphatidylinositol (GPI) (PMID:10839996).

Notable Publications

Author	Pubmed ID	Journal	Application
Diwen Shi	41970320	Bioact Mater	WB
Lei Li	41919892	Braz J Med Biol Res	WB
Xueqiang Deng	41823497	Adv Healthc Mater	WB

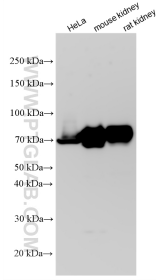
Storage

Storage:
Store at -20°C. Stable for one year after shipment.
Storage Buffer:
PBS with 0.02% sodium azide and 50% glycerol, pH7.3
Aliquoting is unnecessary for -20°C storage

For technical support and original validation data for this product please contact:
T: 4006900926 E: Proteintech-CN@ptglab.com W: ptgcn.com

This product is exclusively available under Proteintech Group brand and is not available to purchase from any other manufacturer.

Selected Validation Data



Various lysates were subjected to SDS PAGE followed by western blot with 33076-1-AP (Alpl antibody) at dilution of 1:4000 incubated at room temperature for 1.5 hours.