

For Research Use Only

# BBIP1 Polyclonal antibody, PBS Only

Catalog Number: 33050-1-PBS

Featured Product



## Basic Information

Catalog Number:

33050-1-PBS

Source:

Rabbit

Isotype:

IgG

Immunogen Catalog Number:

AG36924

GenBank Accession Number:

BC015550

GeneID (NCBI):

92482

UNIPROT ID:

A8MTZ0

Full Name:

non-protein coding RNA 81

Observed MW:

22 kDa

Purification Method:

Antigen affinity Purification

## Applications

Tested Applications:

WB, Indirect ELISA

Species Specificity:

human

## Background Information

The BBIP1 protein is a key component of the BBSome complex and was identified due to its role in the pathogenesis of Bardet-Biedl syndrome (BBS). This protein localizes to the base of cellular cilia and plays an indispensable role in ciliary assembly, maintenance, and signal transduction. As an adapter for membrane protein trafficking, BBIP1 works in coordination with other members of the BBSome to precisely transport specific cargo proteins into the cilium, an important cellular organelle. Loss of its function disrupts the stability of the BBSome complex, leading to abnormalities in ciliary structure and function. This, in turn, causes various clinical symptoms of BBS, including retinal degeneration, obesity, and polydactyly. Therefore, research on BBIP1 is central to understanding the molecular basis of cilia-related diseases (ciliopathies).

## Storage

Storage:

Store at -80°C.

The product is shipped with ice packs. Upon receipt, store it immediately at -80°C

Storage Buffer:

PBS only, pH7.3

For technical support and original validation data for this product please contact:

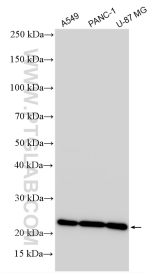
T: 4006900926

E: [Proteintech-CN@ptglab.com](mailto:Proteintech-CN@ptglab.com)

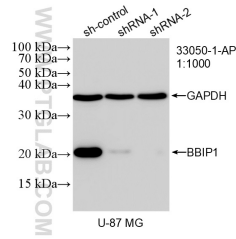
W: [ptgcn.com](http://ptgcn.com)

This product is exclusively available under Proteintech Group brand and is not available to purchase from any other manufacturer.

## Selected Validation Data



Various lysates were subjected to SDS PAGE followed by western blot with 33050-1-AP (BBIP1 antibody) at dilution of 1:1500 incubated at room temperature for 1.5 hours. This data was developed using the same antibody clone with 33050-1-PBS in a different storage buffer formulation.



WB result of BBIP1 antibody (33050-1-AP; 1:1000; incubated at room temperature for 1.5 hours) with sh-Control and sh-BBIP1 transfected U-87 MG cells. This data was developed using the same antibody clone with 33050-1-PBS in a different storage buffer formulation.