

For Research Use Only

# RPRD2 Polyclonal antibody

Catalog Number:33037-1-AP



## Basic Information

Catalog Number:

33037-1-AP

Concentration:

350 ug/ml

Source:

Rabbit

Isotype:

IgG

Immunogen Catalog Number:

AG35410

GenBank Accession Number:

BC045623

GeneID (NCBI):

23248

UNIPROT ID:

Q5VT52

Full Name:

regulation of nuclear pre-mRNA domain containing 2

Calculated MW:

155 kDa

Observed MW:

220 kDa

Purification Method:

Antigen affinity Purification

Recommended Dilutions:

WB: 1:500-1:2000

## Applications

Tested Applications:

WB, ELISA

Species Specificity:

human

Positive Controls:

WB : HEK-293 cells, HeLa cells

## Background Information

RPRD2 (or RNA-associated early-stage antiviral factor) has been shown to be upregulated upon T cell activation, is highly expressed in myeloid cells, binds viral reverse transcripts, and potently restricts HIV-1 infection. RPRD2 is also bound by HIV-1 Vpr and targeted for degradation by the proteasome upon reverse transcription, suggesting RPRD2 impedes reverse transcription and Vpr targeting overcomes this block. RPRD2 is mainly localized to the nucleus and binds RNA, DNA, and DNA:RNA hybrids. RPRD2 has been shown to negatively regulate genome-wide transcription and interact with the HUSH and PAF1 complexes which repress HIV transcription and are implicated in maintenance of HIV latency (PMID: 37882563).

## Storage

Storage:

Store at -20°C. Stable for one year after shipment.

Storage Buffer:

PBS with 0.02% sodium azide and 50% glycerol, pH7.3

Aliquoting is unnecessary for -20°C storage

For technical support and original validation data for this product please contact:

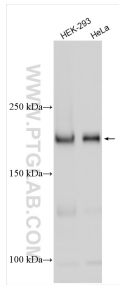
T: 4006900926

E: [Proteintech-CN@ptglab.com](mailto:Proteintech-CN@ptglab.com)

W: [ptgcn.com](http://ptgcn.com)

**This product is exclusively available under Proteintech Group brand and is not available to purchase from any other manufacturer.**

## Selected Validation Data



Various lysates were subjected to SDS PAGE followed by western blot with 33037-1-AP (RPRD2 antibody) at dilution of 1:1000 incubated at room temperature for 1.5 hours.