

For Research Use Only

CHTF8 Polyclonal antibody, PBS Only

Catalog Number:33030-1-PBS



Basic Information

Catalog Number: 33030-1-PBS	GenBank Accession Number: BC018700	Purification Method: Antigen affinity Purification
Concentration: 1 mg/ml	GeneID (NCBI): 54921	
Source: Rabbit	UNIPROT ID: POCG13	
Isotype: IgG	Full Name: CTF8, chromosome transmission fidelity factor 8 homolog (S. cerevisiae)	
Immunogen Catalog Number: AG39083	Observed MW: 15 kDa	

Applications

Tested Applications:
WB, Indirect ELISA

Species Specificity:
human

Background Information

CHTF8 (C-terminal binding protein Transcriptional co-Factor 8) is a crucial protein that serves as a core component of the chromatin assembly factor-1 (CAF-1) complex.

Storage

Storage:
Store at -80°C.
The product is shipped with ice packs. Upon receipt, store it immediately at -80°C
Storage Buffer:
PBS only, pH7.3

For technical support and original validation data for this product please contact:

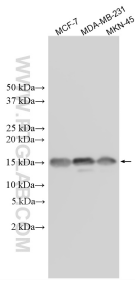
T: 4006900926

E: Proteintech-CN@ptglab.com

W: ptgcn.com

This product is exclusively available under Proteintech Group brand and is not available to purchase from any other manufacturer.

Selected Validation Data



Various lysates were subjected to SDS PAGE followed by western blot with 33030-1-AP (CHTF8 antibody) at dilution of 1:10000 incubated at room temperature for 1.5 hours. This data was developed using the same antibody clone with 33030-1-PBS in a different storage buffer formulation.