

For Research Use Only

# CD158K/KIR3DL2 Polyclonal antibody

Catalog Number:33010-1-AP



## Basic Information

Catalog Number:

33010-1-AP

Concentration:

550 ug/ml

Source:

Rabbit

Isotype:

IgG

Immunogen Catalog Number:

EG4355

GenBank Accession Number:

NM\_006737.4

GeneID (NCBI):

3812

UNIPROT ID:

P43630-1

Full Name:

killer cell immunoglobulin-like receptor, three domains, long cytoplasmic tail, 2

Calculated MW:

50 kDa

Observed MW:

50-60 kDa

Purification Method:

Antigen affinity Purification

Recommended Dilutions:

WB: 1:1000-1:8000

## Applications

Tested Applications:

WB, ELISA

Species Specificity:

human, mouse

Positive Controls:

WB: NK-92 cells, mouse spleen tissue

## Background Information

KIR3DL2, also known as CD158k, is an inhibitory receptor expressed by natural killer (NK) cells and a subset of CD8+ T cells. It plays a role in immune regulation by binding to HLA class I molecules, specifically HLA-A3 and HLA-A11, in a peptide-dependent fashion. KIR3DL2 can also function as an innate immune receptor for delivering CpG DNA to TLR9 in NK cells, highlighting its role in both adaptive and innate immunity. This protein is primarily expressed on the cell surface, particularly in NK cells and certain T cells. It has been implicated in various diseases, particularly in the context of hematological malignancies and autoimmune diseases. Aberrant expression of KIR3DL2 has been observed in neoplastic cells in transformed mycosis fungoides and Sézary syndrome, suggesting its potential as a therapeutic target in primary cutaneous anaplastic large-cell lymphoma (pcALCL).

## Storage

Storage:

Store at -20°C. Stable for one year after shipment.

Storage Buffer:

PBS with 0.02% sodium azide and 50% glycerol, pH7.3

Aliquoting is unnecessary for -20°C storage

For technical support and original validation data for this product please contact:

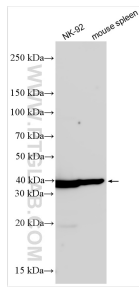
T: 4006900926

E: [Proteintech-CN@ptglab.com](mailto:Proteintech-CN@ptglab.com)

W: [ptgcn.com](http://ptgcn.com)

This product is exclusively available under Proteintech Group brand and is not available to purchase from any other manufacturer.

## Selected Validation Data



Various lysates were subjected to SDS PAGE followed by western blot with 33010-1-AP (CD158K/KIR3DL2 antibody) at dilution of 1:4000 incubated at room temperature for 1.5 hours.