

# Surfactant protein D Polyclonal antibody

Catalog Number: 33001-1-AP

## Basic Information

<b>Catalog Number:</b> 33001-1-AP	<b>GenBank Accession Number:</b> NM_009160.2	<b>Purification Method:</b> Antigen affinity Purification
<b>Concentration:</b> 500 ug/ml	<b>GeneID (NCBI):</b> 20390	<b>Recommended Dilutions:</b> WB 1:1000-1:6000 IHC 1:300-1:1200
<b>Source:</b> Rabbit	<b>UNIPROT ID:</b> P50404	
<b>Isotype:</b> IgG	<b>Full Name:</b> surfactant associated protein D	
<b>Immunogen Catalog Number:</b> EG2924	<b>Calculated MW:</b> 38 kDa <b>Observed MW:</b> 40 kDa	

## Applications

<b>Tested Applications:</b> WB, IHC, ELISA	<b>Positive Controls:</b>
<b>Species Specificity:</b> mouse, rat	<b>WB :</b> mouse lung tissue, rat lung tissue <b>IHC :</b> mouse lung tissue, rat lung tissue

**Note-IHC:** suggested antigen retrieval with **TE buffer pH 9.0; (\*)** Alternatively, antigen retrieval may be performed with **citrate buffer pH 6.0**

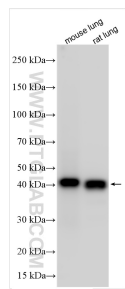
## Background Information

Surfactant protein D (SP-D) is a pattern recognition molecule of the collectin family of C-type lectins, which consist of four structural domains: a cysteine-rich N-terminal domain, a collagen-like region, an alpha-helical coiled-coil neck domain and a C-terminal lectin or carbohydrate-recognition domain (PMID: 16213021; 15030473). SP-D is primarily expressed and secreted by type II alveolar cells (PMID: 16684127). It plays a central role in the pulmonary host defence and the modulation of allergic responses.

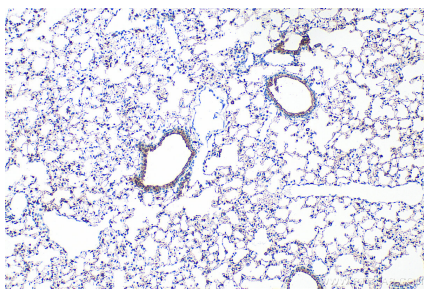
## Storage

**Storage:**  
Store at -20°C. Stable for one year after shipment.  
**Storage Buffer:**  
PBS with 0.02% sodium azide and 50% glycerol, pH7.3  
**Aliquoting is unnecessary for -20°C storage**

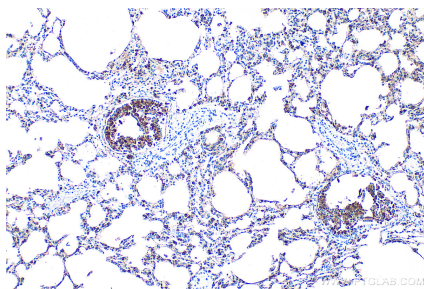
## Selected Validation Data



Various lysates were subjected to SDS PAGE followed by western blot with 33001-1-AP (Surfactant protein D antibody) at dilution of 1:3000 incubated at room temperature for 1.5 hours.



Immunohistochemical analysis of paraffin-embedded mouse lung tissue slide using 33001-1-AP (Surfactant protein D antibody) at dilution of 1:600 (under 10x lens). Heat mediated antigen retrieval with Tris-EDTA buffer (pH 9.0).



Immunohistochemical analysis of paraffin-embedded rat lung tissue slide using 33001-1-AP (Surfactant protein D antibody) at dilution of 1:600 (under 10x lens). Heat mediated antigen retrieval with Tris-EDTA buffer (pH 9.0).