

For Research Use Only

# KDF1 Polyclonal antibody, PBS Only

Catalog Number: 32975-1-PBS



## Basic Information

Catalog Number:

32975-1-PBS

Concentration:

1 mg/ml

Source:

Rabbit

Isotype:

IgG

Immunogen Catalog Number:

AG37124

GenBank Accession Number:

NM\_152365.2

GeneID (NCBI):

126695

UNIPROT ID:

Q8NAX2

Full Name:

chromosome 1 open reading frame

172

Calculated MW:

44 kDa, 398aa

Observed MW:

50 kDa

Purification Method:

Antigen affinity Purification

## Applications

Tested Applications:

WB, Indirect ELISA

Species Specificity:

human

## Background Information

### Storage

Storage:

Store at -80°C.

**The product is shipped with ice packs. Upon receipt, store it immediately at -80°C**

Storage Buffer:

PBS only, pH7.3

For technical support and original validation data for this product please contact:

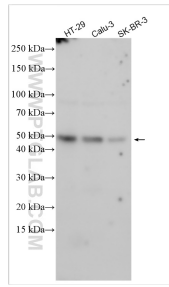
T: 4006900926

E: [Proteintech-CN@ptglab.com](mailto:Proteintech-CN@ptglab.com)

W: [ptgcn.com](http://ptgcn.com)

**This product is exclusively available under Proteintech Group brand and is not available to purchase from any other manufacturer.**

## Selected Validation Data



Various lysates were subjected to SDS PAGE followed by western blot with 32975-1-AP (KDF1 antibody) at dilution of 1:2000 incubated at room temperature for 1.5 hours. This data was developed using the same antibody clone with 32975-1-PBS in a different storage buffer formulation.