

For Research Use Only

# KDF1 Polyclonal antibody

Catalog Number:32975-1-AP



## Basic Information

Catalog Number:

32975-1-AP

Concentration:

300 ug/ml

Source:

Rabbit

Isotype:

IgG

Immunogen Catalog Number:

AG37124

GenBank Accession Number:

NM\_152365.2

GeneID (NCBI):

126695

UNIPROT ID:

Q8NAX2

Full Name:

chromosome 1 open reading frame

172

Calculated MW:

44 kDa, 398aa

Observed MW:

50 kDa

Purification Method:

Antigen affinity Purification

Recommended Dilutions:

WB: 1:1000-1:2000

## Applications

Tested Applications:

WB, ELISA

Species Specificity:

human

Positive Controls:

WB : HT-29 cells, Calu-3 cells, SK-BR-3 cells

## Background Information

### Storage

Storage:

Store at -20°C. Stable for one year after shipment.

Storage Buffer:

PBS with 0.02% sodium azide and 50% glycerol, pH7.3

Aliquoting is unnecessary for -20°C storage

For technical support and original validation data for this product please contact:

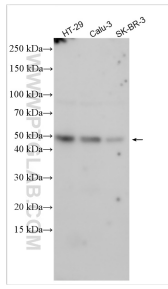
T: 4006900926

E: [Proteintech-CN@ptglab.com](mailto:Proteintech-CN@ptglab.com)

W: [ptgcn.com](http://ptgcn.com)

This product is exclusively available under Proteintech Group brand and is not available to purchase from any other manufacturer.

## Selected Validation Data



Various lysates were subjected to SDS PAGE followed by western blot with 32975-1-AP (KDF1 antibody) at dilution of 1:2000 incubated at room temperature for 1.5 hours.