

For Research Use Only

LAMTOR4 Polyclonal antibody, PBS Only

Catalog Number: 32958-1-PBS



Basic Information

Catalog Number: 32958-1-PBS	GenBank Accession Number: BC130553	Purification Method: Antigen affinity Purification
Concentration: 1 mg/ml	GeneID (NCBI): 389541	
Source: Rabbit	UNIPROT ID: Q0VGL1	
Isotype: IgG	Full Name: chromosome 7 open reading frame 59	
Immunogen Catalog Number: AG39105	Calculated MW: 11 kDa	
	Observed MW: 11 kDa	

Applications

Tested Applications:
WB, IP, Indirect ELISA

Species Specificity:
human

Background Information

Late endosomal/lysosomal adaptor and MAPK and MTOR activator 4 (LAMTOR4) is a protein belonging to the LAMTOR family and believed to be involved in cell cycle, proliferation, and growth (PMID: 29138253). LAMTOR4 has been reported as a regulator complex that acts as an activator of rapamycin complex 1 (mTORC1) by sensing changes in the levels of amino acids (PMID: 33429026). It might offer a strategy to inhibit tumor progression and metastasis in prostate cancer (PMID: 39125671).

Storage

Storage:
Store at -80°C.
The product is shipped with ice packs. Upon receipt, store it immediately at -80°C

Storage Buffer:
PBS only, pH7.3

For technical support and original validation data for this product please contact:

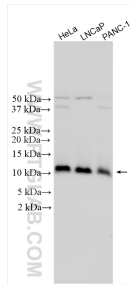
T: 4006900926

E: Proteintech-CN@ptglab.com

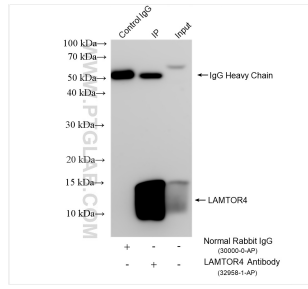
W: ptgcn.com

This product is exclusively available under Proteintech Group brand and is not available to purchase from any other manufacturer.

Selected Validation Data



Various lysates were subjected to SDS PAGE followed by western blot with 32958-1-AP (LAMTOR4 antibody) at dilution of 1:2000 incubated at room temperature for 1.5 hours. This data was developed using the same antibody clone with 32958-1-PBS in a different storage buffer formulation.



IP result of anti-LAMTOR4 (IP:32958-1-AP, 4ug; Detection:32958-1-AP 1:1000) with HeLa cells lysate 1600 ug. This data was developed using the same antibody clone with 32958-1-PBS in a different storage buffer formulation.