

For Research Use Only

# CIR Polyclonal antibody

Catalog Number: 32928-1-AP



## Basic Information

Catalog Number:

32928-1-AP

Concentration:

3000 ug/ml

Source:

Rabbit

Isotype:

IgG

Immunogen Catalog Number:

AG38647

GenBank Accession Number:

NM\_004882.3

GeneID (NCBI):

9541

UNIPROT ID:

Q86X95

Full Name:

CBF1 interacting corepressor

Calculated MW:

52kDa, 450aa

Observed MW:

23 kDa

Purification Method:

Antigen affinity Purification

Recommended Dilutions:

WB 1:1000-1:6000

## Applications

Tested Applications:

WB, ELISA

Species Specificity:

human, mouse

Positive Controls:

WB : mouse brain tissue, mouse heart tissue, mouse liver tissue, mouse pancreas tissue

## Background Information

CIR, a protein originally identified as a CBF1-interacting protein and reported to act as a transcriptional corepressor. CIR is a member of the family of SR-related proteins and that CIR plays a role in splicing regulation. In addition to a basic lysine and acidic serine-rich (BA) domain and a zinc knuckle-like motif, CIR has an arginine/serine dipeptide repeat (RS) domain in its C terminal region. The RS domain has been reported to be present in the superfamily of SR proteins, which are involved in splicing reactions (PMID: 15652350).

## Storage

Storage:

Store at -20°C. Stable for one year after shipment.

Storage Buffer:

PBS with 0.02% sodium azide and 50% glycerol, pH7.3

Aliquoting is unnecessary for -20°C storage

For technical support and original validation data for this product please contact:

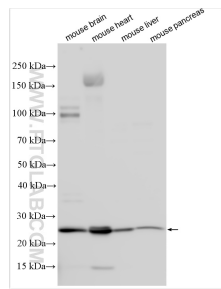
T: 4006900926

E: [Proteintech-CN@ptglab.com](mailto:Proteintech-CN@ptglab.com)

W: [ptgcn.com](http://ptgcn.com)

This product is exclusively available under Proteintech Group brand and is not available to purchase from any other manufacturer.

## Selected Validation Data



Various lysates were subjected to SDS PAGE followed by western blot with 32928-1-AP (CIR antibody) at dilution of 1:3000 incubated at room temperature for 1.5 hours.