

For Research Use Only

CHD1L Polyclonal antibody

Catalog Number: 32923-1-AP



Basic Information

Catalog Number:

32923-1-AP

Concentration:

450 µg/ml

Source:

Rabbit

Isotype:

IgG

Immunogen Catalog Number:

AG38526

GenBank Accession Number:

NM_004284.5

GeneID (NCBI):

9557

UNIPROT ID:

Q86WJ1

Full Name:

chromodomain helicase DNA binding protein 1-like

Calculated MW:

101kDa, 897aa

Observed MW:

101 kDa

Purification Method:

Antigen affinity Purification

Recommended Dilutions:

WB 1:1000-1:4000

Applications

Tested Applications:

WB, ELISA

Species Specificity:

human

Positive Controls:

WB: A549 cells, HEK-293 cells, HeLa cells, HepG2 cells, MOLT-4 cells, U2OS cells

Background Information

CHD1L (Chromodomain Helicase DNA Binding Protein 1-Like), also known as ALC1 (Amplified in Liver Cancer 1), encodes a multifunctional protein involved in various cellular processes such as chromatin remodeling, cell differentiation, and development. CHD1L acts as an ATP-dependent chromatin remodeling enzyme with an ATPase catalytic domain activated by double-stranded DNA. It interacts with PARP1 (poly-ADP-ribose polymerase 1) to promote chromatin relaxation at DNA damage sites, facilitating DNA repair. Overexpression of CHD1L leads to dysregulation of downstream targets in various cancers.

Storage

Storage:

Store at -20°C. Stable for one year after shipment.

Storage Buffer:

PBS with 0.02% sodium azide and 50% glycerol, pH7.3

Aliquoting is unnecessary for -20°C storage

For technical support and original validation data for this product please contact:

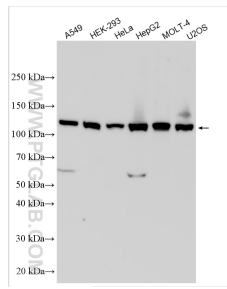
T: 4006900926

E: Proteintech-CN@ptglab.com

W: ptgcn.com

This product is exclusively available under Proteintech Group brand and is not available to purchase from any other manufacturer.

Selected Validation Data



Various lysates were subjected to SDS PAGE followed by western blot with 32923-1-AP (CHD1L antibody) at dilution of 1:2000 incubated at room temperature for 1.5 hours.