

L1CAM/CD171 Polyclonal antibody

Catalog Number: 32885-1-AP

Basic Information

Catalog Number: 32885-1-AP	GenBank Accession Number: N/A	Purification Method: Antigen affinity Purification
Concentration: 400 ug/ml	GeneID (NCBI): 16728	Recommended Dilutions: WB: 1:2000-1:16000 IHC: 1:200-1:800
Source: Rabbit	UNIPROT ID: P11627	
Isotype: IgG	Full Name: L1 cell adhesion molecule	
Immunogen Catalog Number: EG3022	Calculated MW: 141 kDa Observed MW: 200-220 kDa, 140 kDa	

Applications

Tested Applications: WB, IHC, ELISA	Positive Controls:
Species Specificity: mouse, rat	WB : mouse brain tissue, mouse cerebellum tissue, rat brain tissue, rat cerebellum tissue
Note-IHC: suggested antigen retrieval with TE buffer pH 9.0; (*) Alternatively, antigen retrieval may be performed with citrate buffer pH 6.0	IHC : mouse cerebellum tissue, mouse brain tissue

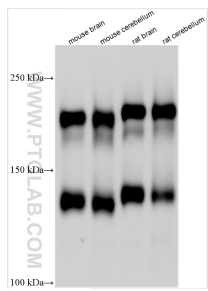
Background Information

L1CAM, also known as NCAM-L1 or CD171, is a cell adhesion molecule of the immunoglobulin superfamily. It is a 200-220 kDa transmembrane glycoprotein composed of six Ig-like domains and five fibronectin type III repeats followed by a transmembrane region and a highly conserved cytoplasmic tail (PMID: 3412448; 22796939). L1CAM is primarily expressed in the nervous system and is involved in neuron-neuron adhesion, neurite fasciculation, outgrowth of neurites, cerebellar granule cell migration, neurite outgrowth on Schwann cells and interactions among epithelial cells of intestinal crypts (PMID: 3412448; 10767310). L1CAM is overexpressed in many human cancers and is often associated with bad prognosis (PMID: 27267927; 26111503). It has been reported that L1CAM can be proteolytically cleaved into a soluble fragment of 140 kDa and an intracellular fragment of 80-85 kDa (PMID: 30842511; 34380733).

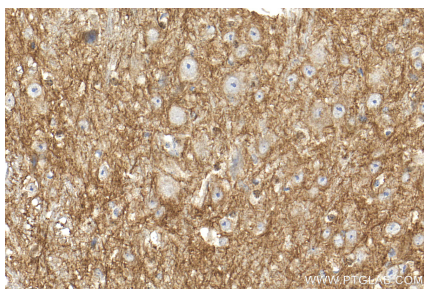
Storage

Storage:
Store at -20°C. Stable for one year after shipment.
Storage Buffer:
PBS with 0.02% sodium azide and 50% glycerol, pH7.3
Aliquoting is unnecessary for -20°C storage

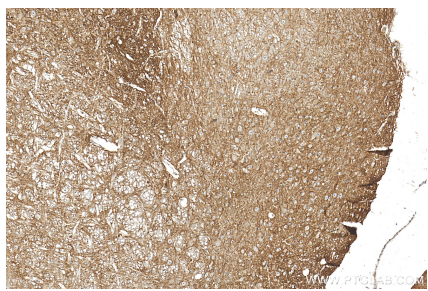
Selected Validation Data



Various lysates were subjected to SDS PAGE followed by western blot with 32885-1-AP (L1CAM antibody) at dilution of 1:8000 incubated at room temperature for 1.5 hours.



Immunohistochemical analysis of paraffin-embedded mouse cerebellum tissue slide using 32885-1-AP (L1CAM antibody) at dilution of 1:400 (under 40x lens). Heat mediated antigen retrieval with Tris-EDTA buffer (pH 9.0).



Immunohistochemical analysis of paraffin-embedded mouse cerebellum tissue slide using 32885-1-AP (L1CAM antibody) at dilution of 1:400 (under 10x lens). Heat mediated antigen retrieval with Tris-EDTA buffer (pH 9.0).