

For Research Use Only

# OVCH1 Polyclonal antibody, PBS Only

Catalog Number:32879-1-PBS



## Basic Information

<b>Catalog Number:</b> 32879-1-PBS	<b>GenBank Accession Number:</b> BC156869	<b>Purification Method:</b> Antigen affinity Purification
<b>Concentration:</b> 1 mg/ml	<b>GeneID (NCBI):</b> 341350	
<b>Source:</b> Rabbit	<b>UNIPROT ID:</b> Q7RTY7	
<b>Isotype:</b> IgG	<b>Full Name:</b> ovochoymase 1	
<b>Immunogen Catalog Number:</b> AG37723	<b>Calculated MW:</b> 1134 aa, 125 kDa	
	<b>Observed MW:</b> 125-135 kDa	

## Applications

**Tested Applications:**  
WB, Indirect ELISA

**Species Specificity:**  
human

## Background Information

OVCH1 (Ovochoymase 1) is a secretory protein that belongs to the serine protease family and is predicted to have metal ion binding activity and serine-type endopeptidase activity. It is involved in the proteolysis process and functions within the plasma membrane. OVCH1 contains CUB domains and a Trypsin-like serine protease domain, which suggest that OVCH1 may play a role in development. Additionally, genetic variations in the OVCH1 gene may affect its function, thereby influencing individual phenotypes.

## Storage

**Storage:**  
Store at -80°C.  
**The product is shipped with ice packs. Upon receipt, store it immediately at -80°C**

**Storage Buffer:**  
PBS only, pH7.3

For technical support and original validation data for this product please contact:

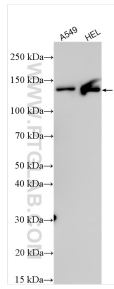
T: 4006900926

E: [Proteintech-CN@ptglab.com](mailto:Proteintech-CN@ptglab.com)

W: [ptgcn.com](http://ptgcn.com)

**This product is exclusively available under Proteintech Group brand and is not available to purchase from any other manufacturer.**

## Selected Validation Data



Various lysates were subjected to SDS PAGE followed by western blot with 32879-1-AP (OVCH1 antibody) at dilution of 1:1000 incubated at room temperature for 1.5 hours. This data was developed using the same antibody clone with 32879-1-PBS in a different storage buffer formulation.