

For Research Use Only

TXNDC15 Polyclonal antibody, PBS Only

Catalog Number: 32874-1-PBS

Featured Product



Basic Information

Catalog Number: 32874-1-PBS	GenBank Accession Number: BC032568	Purification Method: Antigen affinity Purification
Concentration: 1 mg/ml	GeneID (NCBI): 79770	
Source: Rabbit	UNIPROT ID: Q96J42	
Isotype: IgG	Full Name: thioredoxin domain containing 15	
Immunogen Catalog Number: AG37138	Observed MW: 55 kDa	

Applications

Tested Applications:
WB, IHC, Indirect ELISA

Species Specificity:
human

Background Information

TXNDC15 (thioredoxin domain-containing protein 15) is a single-pass type I transmembrane protein that contains a thioredoxin domain and is primarily localized in the cytoplasm. It plays a positive regulatory role in the Hedgehog signaling pathway within cilia and actively participates in the process of ciliogenesis, exerting significant influence on the structure and function of cilia-an essential cellular organelle. Additionally, TXNDC15 has been found to form mixed disulfide complexes with endoplasmic reticulum-resident protein disulfide isomerase (PDI) family members, such as ERp57, PDI, and ERp44, suggesting its involvement in protein folding and quality control processes. Notably, mutations in the TXNDC15 gene are associated with a rare and lethal genetic disorder known as Meckel-Gruber syndrome, which is caused by defects in ciliogenesis.

Storage

Storage:
Store at -80°C.
The product is shipped with ice packs. Upon receipt, store it immediately at -80°C

Storage Buffer:
PBS only, pH7.3

For technical support and original validation data for this product please contact:

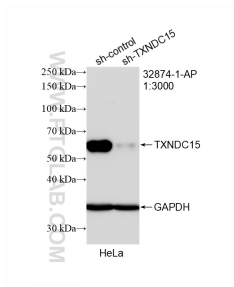
T: 4006900926

E: Proteintech-CN@ptglab.com

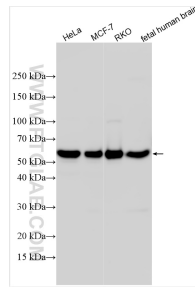
W: ptgcn.com

This product is exclusively available under Proteintech Group brand and is not available to purchase from any other manufacturer.

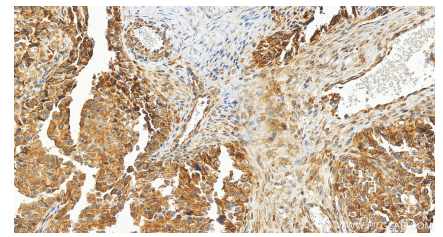
Selected Validation Data



WB result of TXNDC15 antibody (32874-1-AP; 1:3000; incubated at room temperature for 1.5 hours) with sh-Control and sh-TXNDC15 transfected HeLa cells. This data was developed using the same antibody clone with 32874-1-PBS in a different storage buffer formulation.



Various lysates were subjected to SDS PAGE followed by western blot with 32874-1-AP (TXNDC15 antibody) at dilution of 1:3000 incubated at room temperature for 1.5 hours. This data was developed using the same antibody clone with 32874-1-PBS in a different storage buffer formulation.



Immunohistochemical analysis of paraffin-embedded human ovary cancer tissue slide using 32874-1-AP (TXNDC15 antibody) at dilution of 1:600 (under 20x lens). Heat mediated antigen retrieval with Tris-EDTA buffer (pH 9.0). This data was developed using the same antibody clone with 32874-1-PBS in a different storage buffer formulation.