

For Research Use Only

CATSPERE Polyclonal antibody, PBS Only

Catalog Number: 32840-1-PBS



Basic Information

Catalog Number:

32840-1-PBS

Concentration:

1 mg/ml

Source:

Rabbit

Isotype:

IgG

Immunogen Catalog Number:

AG36791

GenBank Accession Number:

BC032859

GeneID (NCBI):

257044

UNIPROT ID:

Q5SY80

Full Name:

chromosome 1 open reading frame

101

Calculated MW:

110 kDa

Observed MW:

110 kDa

Purification Method:

Antigen affinity Purification

Applications

Tested Applications:

WB, Indirect ELISA

Species Specificity:

human, mouse, rat

Background Information

Cation channel sperm-associated auxiliary subunit epsilon (CATSPERE) is a critical component of the CatSper calcium channel complex, essential for sperm function and male fertility. CATSPERE interacts with the pore-forming subunits and contributes to the stability and function of the entire CatSper complex (PMID: 39605618). This complex is crucial for sperm capacitation, which includes the development of hyperactivated motility and the acrosome reaction, necessary for successful fertilization (PMID: 17330112; 18508611; 29707693).

Storage

Storage:

Store at -80°C.

The product is shipped with ice packs. Upon receipt, store it immediately at -80°C

Storage Buffer:

PBS only

For technical support and original validation data for this product please contact:

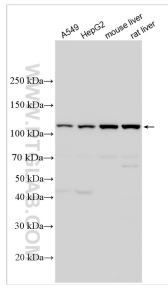
T: 4006900926

E: Proteintech-CN@ptglab.com

W: ptgcn.com

This product is exclusively available under Proteintech Group brand and is not available to purchase from any other manufacturer.

Selected Validation Data



Various lysates were subjected to SDS PAGE followed by western blot with 32840-1-AP (CATSPERE antibody) at dilution of 1:1000 incubated at room temperature for 1.5 hours. This data was developed using the same antibody clone with 32840-1-PBS in a different storage buffer formulation.