

For Research Use Only

# CATSPERE Polyclonal antibody

Catalog Number: 32840-1-AP



## Basic Information

Catalog Number:

32840-1-AP

Concentration:

350 ug/ml

Source:

Rabbit

Isotype:

IgG

Immunogen Catalog Number:

AG36791

GenBank Accession Number:

BC032859

GeneID (NCBI):

257044

UNIPROT ID:

Q5SY80

Full Name:

chromosome 1 open reading frame

101

Calculated MW:

110 kDa

Observed MW:

110 kDa

Purification Method:

Antigen affinity Purification

Recommended Dilutions:

WB 1:500-1:2000

## Applications

Tested Applications:

WB, ELISA

Species Specificity:

human, mouse, rat

Positive Controls:

WB: A549 cells, HepG2 cells, mouse liver tissue, rat liver tissue

## Background Information

Cation channel sperm-associated auxiliary subunit epsilon (CATSPERE) is a critical component of the CatSper calcium channel complex, essential for sperm function and male fertility. CATSPERE interacts with the pore-forming subunits and contributes to the stability and function of the entire CatSper complex (PMID: 39605618). This complex is crucial for sperm capacitation, which includes the development of hyperactivated motility and the acrosome reaction, necessary for successful fertilization (PMID: 17330112; 18508611; 29707693).

## Storage

Storage:

Store at -20°C. Stable for one year after shipment.

Storage Buffer:

PBS with 0.02% sodium azide and 50% glycerol

Aliquoting is unnecessary for -20°C storage

For technical support and original validation data for this product please contact:

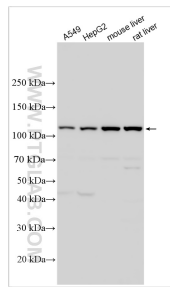
T: 4006900926

E: [Proteintech-CN@ptglab.com](mailto:Proteintech-CN@ptglab.com)

W: [ptgcn.com](http://ptgcn.com)

This product is exclusively available under Proteintech Group brand and is not available to purchase from any other manufacturer.

## Selected Validation Data



Various lysates were subjected to SDS PAGE followed by western blot with 32840-1-AP (CATSPERE antibody) at dilution of 1:1000 incubated at room temperature for 1.5 hours.