

For Research Use Only

LEPR Polyclonal antibody

Catalog Number: 32817-1-AP **1 Publications**



Basic Information

Catalog Number: 32817-1-AP	GenBank Accession Number: NM_146146.2	Purification Method: Antigen affinity Purification
Source: Rabbit	GeneID (NCBI): 16847	Recommended Dilutions: WB: 1:500-1:1000
Isotype: IgG	UNIPROT ID: P48356-1	
Immunogen Catalog Number: EG2930	Full Name: leptin receptor	
	Calculated MW: 131 kDa	
	Observed MW: 150 kDa	

Applications

Tested Applications: WB, ELISA	Positive Controls: WB : mouse heart tissue, rat heart tissue
Cited Applications: WB, IF	
Species Specificity: mouse, rat	
Cited Species: rat	

Background Information

Leptin receptor (LEPR) is a protein-coding gene that encodes a receptor for leptin, an adipocyte-specific hormone that regulates body weight and fat metabolism (PMID: 11861497; 16333525). LEPR is involved in various physiological processes, including energy homeostasis, immune function, and hematopoiesis (PMID: 11923481; 25383904). It activates the JAK2/STAT3 signaling pathway, which is crucial for mediating leptin's effects on gene transcription and cellular responses (PMID: 11923481). LEPR also plays a role in the regulation of lipid metabolism, blood pressure, and blood glucose levels (PMID: 29254602).

Notable Publications

Author	Pubmed ID	Journal	Application
Xuan Li	41285771	Nat Commun	WB,IF

Storage

Storage:
Store at -20°C. Stable for one year after shipment.
Storage Buffer:
PBS with 0.02% sodium azide and 50% glycerol, pH7.3
Aliquoting is unnecessary for -20°C storage

For technical support and original validation data for this product please contact:

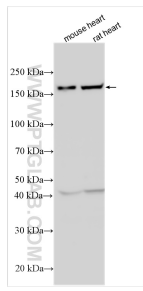
T: 4006900926

E: Proteintech-CN@ptglab.com

W: ptgcn.com

This product is exclusively available under Proteintech Group brand and is not available to purchase from any other manufacturer.

Selected Validation Data



Various lysates were subjected to SDS PAGE followed by western blot with 32817-1-AP (LEPR antibody) at dilution of 1:500 incubated at room temperature for 1.5 hours.