

For Research Use Only

ELL2 Polyclonal antibody

Catalog Number: 32800-1-AP

Featured Product



Basic Information

Catalog Number:

32800-1-AP

Source:

Rabbit

Isotype:

IgG

Immunogen Catalog Number:

AG39224

GenBank Accession Number:

BC028412

GeneID (NCBI):

22936

UNIPROT ID:

O00472

Full Name:

elongation factor, RNA polymerase II,
2

Calculated MW:

640 aa, 72 kDa

Observed MW:

80-90 kDa

Purification Method:

Antigen affinity purification

Recommended Dilutions:

WB: 1:1000-1:8000

Applications

Tested Applications:

WB, ELISA

Species Specificity:

human

Positive Controls:

WB : HeLa cells, HepG2 cells

Background Information

ELL2 (Elongation Factor for RNA Polymerase II 2) is a key transcriptional elongation factor that regulates RNA polymerase II (Pol II) during mRNA synthesis (PMID: 34265249). It belongs to the ELL gene family, which includes ELL1, ELL2, and ELL3, and plays a crucial role in controlling the elongation phase of transcription (PMID: 9108030). ELL2 is an androgen-responsive gene that is expressed by prostate epithelial cells and is frequently down-regulated in prostate cancer (PMID: 29179998). The predicted molecular weight of the ELL2 protein is 72 kDa, but due to post-translational modifications, its molecular weight is approximately 90 kDa. (PMID: 39582094, PMID: 34948391)

Storage

Storage:

Store at -20°C. Stable for one year after shipment.

Storage Buffer:

PBS with 0.02% sodium azide and 50% glycerol, pH7.3

Aliquoting is unnecessary for -20°C storage

For technical support and original validation data for this product please contact:

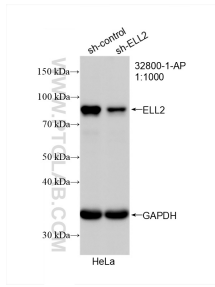
T: 4006900926

E: Proteintech-CN@ptglab.com

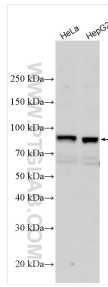
W: ptgcn.com

This product is exclusively available under Proteintech Group brand and is not available to purchase from any other manufacturer.

Selected Validation Data



WB result of ELL2 antibody (32800-1-AP; 1:1000; incubated at room temperature for 1.5 hours) with sh-Control and sh-ELL2 transfected HeLa cells.



Various lysates were subjected to SDS PAGE followed by western blot with 32800-1-AP (ELL2 antibody) at dilution of 1:4000 incubated at room temperature for 1.5 hours.