

For Research Use Only

# ATP1B1 Polyclonal antibody

Catalog Number: 32764-1-AP

1 Publications



## Basic Information

<b>Catalog Number:</b> 32764-1-AP	<b>GenBank Accession Number:</b> NM_009721.6	<b>Purification Method:</b> Antigen affinity Purification
<b>Source:</b> Rabbit	<b>GeneID (NCBI):</b> 11931	<b>Recommended Dilutions:</b> WB: 1:5000-1:50000 IHC: 1:500-1:2000
<b>Isotype:</b> IgG	<b>UNIPROT ID:</b> P14094	
<b>Immunogen Catalog Number:</b> EG3007	<b>Full Name:</b> ATPase, Na <sup>+</sup> /K <sup>+</sup> transporting, beta 1 polypeptide	
	<b>Calculated MW:</b> 35 kDa	
	<b>Observed MW:</b> 40-50 kDa	

## Applications

### Tested Applications:

WB, IHC, ELISA

### Cited Applications:

WB

### Species Specificity:

human, mouse, rat

### Cited Species:

mouse

**Note-IHC: suggested antigen retrieval with TE buffer pH 9.0; (\*) Alternatively, antigen retrieval may be performed with citrate buffer pH 6.0**

### Positive Controls:

WB: fetal human brain tissue, mouse brain tissue, mouse liver tissue, rat brain tissue, rat heart tissue, mouse heart tissue

IHC: mouse liver tissue, mouse brain tissue

## Background Information

ATP1B1 is one of beta subunits of the Na<sup>+</sup>/K<sup>+</sup> ATPase and responsible for formation and structural integrity of the Na<sup>+</sup>/K<sup>+</sup> ATPase. The Na<sup>+</sup>/K<sup>+</sup> ATPase is a plasma membrane pump consisting of alpha, beta, and gamma subunits. At least four of Na<sup>+</sup>/K<sup>+</sup>-ATPase beta subunits ( $\beta$  1,  $\beta$  2,  $\beta$  3,  $\beta$  4) have been identified in mammalian cells; the  $\beta$  1-subunit (ATP1B1) is the most ubiquitous. The Na<sup>+</sup>/K<sup>+</sup> ATPase  $\beta$  subunits have multiple N-glycosylation sites. The predicted MW of ATP1B1 is 35 kDa, while it migrates around 40-52 kDa due to the variable glycosylation. (PMID: 10896885, 17714085)

## Notable Publications

Author	Pubmed ID	Journal	Application
Tae-Sik Nam	41085209	FASEB J	WB

## Storage

### Storage:

Store at -20°C. Stable for one year after shipment.

### Storage Buffer:

PBS with 0.02% sodium azide and 50% glycerol, pH7.3

Aliquoting is unnecessary for -20°C storage

For technical support and original validation data for this product please contact:

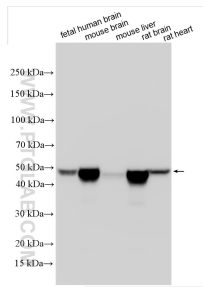
T: 4006900926

E: Proteintech-CN@ptglab.com

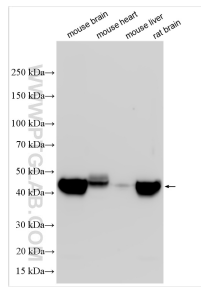
W: ptgcn.com

**This product is exclusively available under Proteintech Group brand and is not available to purchase from any other manufacturer.**

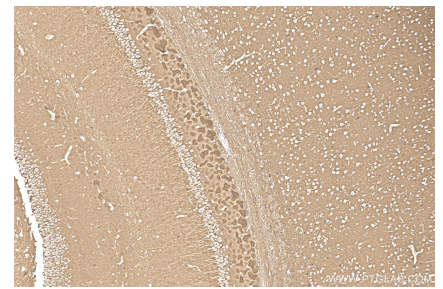
## Selected Validation Data



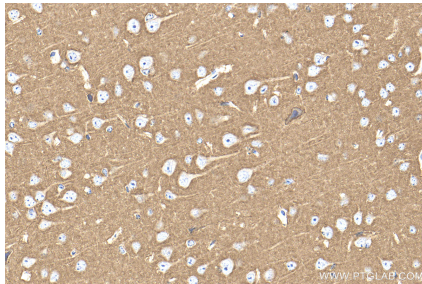
Various lysates were subjected to SDS PAGE followed by western blot with 32764-1-AP (ATP1B1 antibody) at dilution of 1:10000 incubated at room temperature for 1.5 hours.



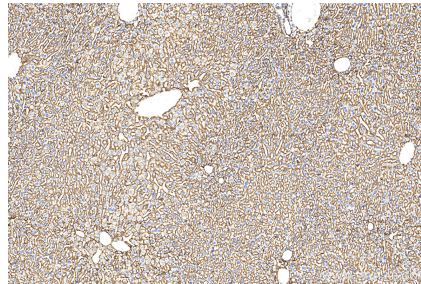
Various lysates were subjected to SDS PAGE followed by western blot with 32764-1-AP (ATP1B1 antibody) at dilution of 1:10000 incubated at room temperature for 1.5 hours.



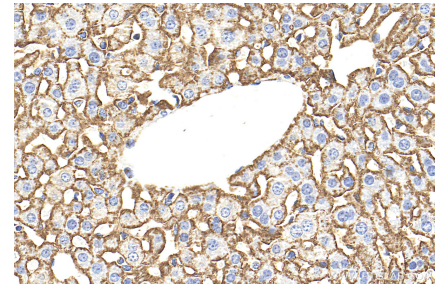
Immunohistochemical analysis of paraffin-embedded mouse brain tissue slide using 32764-1-AP (ATP1B1 antibody) at dilution of 1:1000 (under 10x lens). Heat mediated antigen retrieval with Tris-EDTA buffer (pH 9.0).



Immunohistochemical analysis of paraffin-embedded mouse brain tissue slide using 32764-1-AP (ATP1B1 antibody) at dilution of 1:1000 (under 40x lens). Heat mediated antigen retrieval with Tris-EDTA buffer (pH 9.0).



Immunohistochemical analysis of paraffin-embedded mouse liver tissue slide using 32764-1-AP (ATP1B1 antibody) at dilution of 1:1000 (under 10x lens). Heat mediated antigen retrieval with Tris-EDTA buffer (pH 9.0).



Immunohistochemical analysis of paraffin-embedded mouse liver tissue slide using 32764-1-AP (ATP1B1 antibody) at dilution of 1:1000 (under 40x lens). Heat mediated antigen retrieval with Tris-EDTA buffer (pH 9.0).