

For Research Use Only

KCTD20 Polyclonal antibody, PBS Only

Catalog Number: 32728-1-PBS



Basic Information

Catalog Number:

32728-1-PBS

Concentration:

1 mg/ml

Source:

Rabbit

Isotype:

IgG

Immunogen Catalog Number:

AG36947

GenBank Accession Number:

NM_173562.4

GeneID (NCBI):

222658

UNIPROT ID:

Q7Z5Y7

Full Name:

potassium channel tetramerisation domain containing 20

Calculated MW:

47kDa, 419aa

Purification Method:

Antigen affinity Purification

Applications

Tested Applications:

IHC, IF/ICC, Indirect ELISA

Species Specificity:

human, mouse

Background Information

Storage

Storage:

Store at -80°C.

The product is shipped with ice packs. Upon receipt, store it immediately at -80°C

Storage Buffer:

PBS only, pH7.3

For technical support and original validation data for this product please contact:

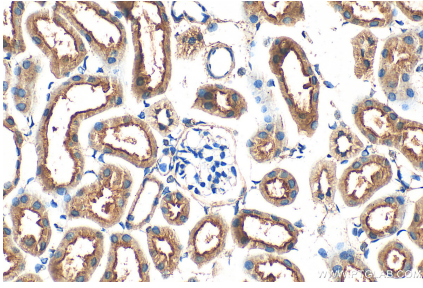
T: 4006900926

E: Proteintech-CN@ptglab.com

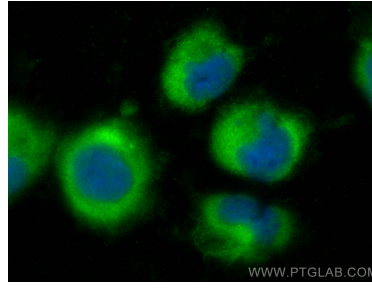
W: ptgcn.com

This product is exclusively available under Proteintech Group brand and is not available to purchase from any other manufacturer.

Selected Validation Data



Immunohistochemical analysis of paraffin-embedded mouse kidney tissue slide using 32728-1-AP (KCTD20 antibody) at dilution of 1:200 (under 40x lens). Heat mediated antigen retrieval with Tris-EDTA buffer (pH 9.0). This data was developed using the same antibody clone with 32728-1-PBS in a different storage buffer formulation.



Immunofluorescent analysis of (-20°C Ethanol) fixed U-251 cells using KCTD20 antibody (32728-1-AP) at dilution of 1:400 and CoraLite® 488-Conjugated Goat Anti-Rabbit IgG(H+L) (SA00013-2). This data was developed using the same antibody clone with 32728-1-PBS in a different storage buffer formulation.