

For Research Use Only

KCTD20 Polyclonal antibody

Catalog Number:32728-1-AP



Basic Information

Catalog Number:

32728-1-AP

Concentration:

550 ug/ml

Source:

Rabbit

Isotype:

IgG

Immunogen Catalog Number:

AG36947

GenBank Accession Number:

NM_173562.4

GeneID (NCBI):

222658

UNIPROT ID:

Q7Z5Y7

Full Name:

potassium channel tetramerisation domain containing 20

Calculated MW:

47kDa, 419aa

Purification Method:

Antigen affinity Purification

Recommended Dilutions:

IHC: 1:50-1:500

IF/ICC: 1:200-1:800

Applications

Tested Applications:

IHC, IF/ICC, ELISA

Species Specificity:

human, mouse

Note-IHC: suggested antigen retrieval with TE buffer pH 9.0; (*) Alternatively, antigen retrieval may be performed with citrate buffer pH 6.0

Positive Controls:

IHC : mouse kidney tissue,

IF/ICC : U-251 cells,

Background Information

Storage

Storage:

Store at -20°C. Stable for one year after shipment.

Storage Buffer:

PBS with 0.02% sodium azide and 50% glycerol, pH7.3

Aliquoting is unnecessary for -20°C storage

For technical support and original validation data for this product please contact:

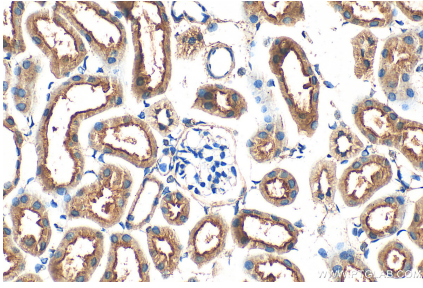
T: 4006900926

E: Proteintech-CN@ptglab.com

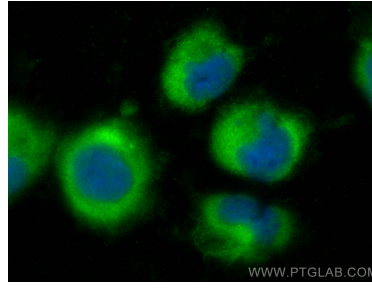
W: ptgcn.com

This product is exclusively available under Proteintech Group brand and is not available to purchase from any other manufacturer.

Selected Validation Data



Immunohistochemical analysis of paraffin-embedded mouse kidney tissue slide using 32728-1-AP (KCTD20 antibody) at dilution of 1:200 (under 40x lens). Heat mediated antigen retrieval with Tris-EDTA buffer (pH 9.0).



Immunofluorescent analysis of (-20°C Ethanol) fixed U-251 cells using KCTD20 antibody (32728-1-AP) at dilution of 1:400 and CoraLite® 488-Conjugated Goat Anti-Rabbit IgG(H+L) (SA00013-2).