

For Research Use Only

# KLHL7 Polyclonal antibody

Catalog Number:32697-1-AP



## Basic Information

<b>Catalog Number:</b> 32697-1-AP	<b>GenBank Accession Number:</b> BC039585	<b>Purification Method:</b> Antigen affinity Purification
<b>Concentration:</b> 500 ug/ml	<b>GeneID (NCBI):</b> 55975	<b>Recommended Dilutions:</b> WB 1:500-1:1000
<b>Source:</b> Rabbit	<b>UNIPROT ID:</b> Q8IXQ5	
<b>Isotype:</b> IgG	<b>Full Name:</b> kelch-like 7 (Drosophila)	
<b>Immunogen Catalog Number:</b> AG38050	<b>Calculated MW:</b> 586 aa, 66 kDa	
	<b>Observed MW:</b> 65 kDa	

## Applications

**Tested Applications:**  
WB, ELISA

**Species Specificity:**  
human, mouse, rat

**Positive Controls:**

**WB :** mouse brain tissue, mouse cerebellum tissue, mouse testis tissue, rat brain tissue, rat cerebellum tissue, HeLa cells, HepG2 cells

## Background Information

KLHL7 (Kelch-like protein 7) is a member of the Kelch-like protein family and plays significant roles in various biological processes, including cell cycle regulation, protein degradation, and cytoskeleton organization. KLHL7 is highly expressed in various cancers and is associated with malignant progression and poor prognosis. In breast cancer, high expression of KLHL7 is linked to higher histological grades, estrogen receptor (ER)-negative or human epidermal growth factor receptor 2 (HER-2)-positive tumors, and triple-negative breast cancer (TNBC), and patients with high KLHL7 expression have shorter survival times. In gastric cancer, silencing KLHL7 gene expression can inhibit the proliferation, migration, and invasion of gastric cancer cells and has shown tumor-suppressive effects in vivo models. Moreover, KLHL7 is highly expressed in colorectal cancer and ovarian cancer, among others, and is significantly associated with low patient survival rates.

## Storage

**Storage:**  
Store at -20°C. Stable for one year after shipment.  
**Storage Buffer:**  
PBS with 0.02% sodium azide and 50% glycerol  
**Aliquoting is unnecessary for -20°C storage**

For technical support and original validation data for this product please contact:

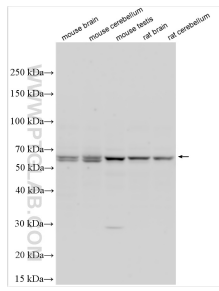
T: 4006900926

E: [Proteintech-CN@ptglab.com](mailto:Proteintech-CN@ptglab.com)

W: [ptgcn.com](http://ptgcn.com)

**This product is exclusively available under Proteintech Group brand and is not available to purchase from any other manufacturer.**

## Selected Validation Data



Various lysates were subjected to SDS PAGE followed by western blot with 32697-1-AP (KLHL7 antibody) at dilution of 1:800 incubated at room temperature for 1.5 hours.