

For Research Use Only

S100A8 Polyclonal antibody

Catalog Number: 32681-1-AP



Basic Information

Catalog Number:

32681-1-AP

Concentration:

450 ug/ml

Source:

Rabbit

Isotype:

IgG

Immunogen Catalog Number:

EG2959

GenBank Accession Number:

NM_013650.2

GeneID (NCBI):

20201

UNIPROT ID:

P27005

Full Name:

S100 calcium binding protein A8
(calgranulin A)

Calculated MW:

10 kDa

Observed MW:

11 kDa

Purification Method:

Antigen affinity Purification

Recommended Dilutions:

WB: 1:2000-1:12000

IP: 0.5-4.0 ug for 1.0-3.0 mg of total
protein lysate

IF/ICC: 1:200-1:800

Applications

Tested Applications:

WB, IF/ICC, IP, ELISA

Species Specificity:

mouse, rat

Positive Controls:

WB : rat spleen tissue, mouse spleen tissue

IP : mouse spleen tissue,

IF/ICC : NIH/3T3 cells,

Background Information

S100A8 is a member of the S100 family of proteins containing 2 EF-hand calcium-binding motifs. S100 proteins are localized in the cytoplasm and/or nucleus of a wide range of cells, and involved in the regulation of a number of cellular processes such as cell cycle progression and differentiation. S100 genes include at least 13 members which are located as a cluster on chromosome 1q21. This protein may function in the inhibition of casein kinase and as a cytokine. S100A8 may form homodimer or heterodimer with S100A9(16216873).

Storage

Storage:

Store at -20°C. Stable for one year after shipment.

Storage Buffer:

PBS with 0.02% sodium azide and 50% glycerol, pH7.3

Aliquoting is unnecessary for -20°C storage

For technical support and original validation data for this product please contact:

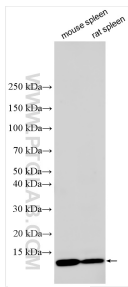
T: 4006900926

E: Proteintech-CN@ptglab.com

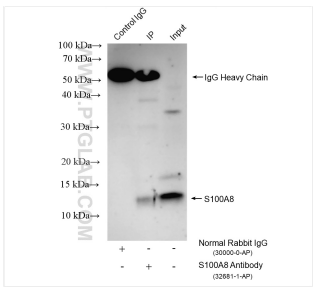
W: ptgcn.com

This product is exclusively available under Proteintech Group brand and is not available to purchase from any other manufacturer.

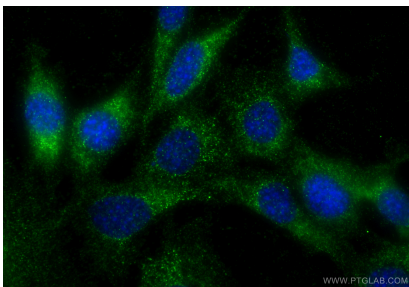
Selected Validation Data



Various lysates were subjected to SDS PAGE followed by western blot with 32681-1-AP (S100a8 antibody) at dilution of 1:6000 incubated at room temperature for 1.5 hours.



IP result of anti-S100A8 (IP:32681-1-AP, 4ug; Detection:32681-1-AP 1:3000) with mouse spleen tissue lysate 2480 ug.



Immunofluorescent analysis of (-20°C Ethanol) fixed NIH/3T3 cells using S100A8 antibody (32681-1-AP) at dilution of 1:400 and CoraLite®488-Conjugated Goat Anti-Rabbit IgG(H+L) (SA00013-2).