

For Research Use Only

# SLAM/CD150 Polyclonal antibody

Catalog Number:32660-1-AP



## Basic Information

<b>Catalog Number:</b> 32660-1-AP	<b>GenBank Accession Number:</b> NM_013730.4	<b>Purification Method:</b> Antigen affinity purification
<b>Concentration:</b> 600 ug/ml	<b>GeneID (NCBI):</b> 27218	<b>Recommended Dilutions:</b> WB 1:500-1:1000
<b>Source:</b> Rabbit	<b>UNIPROT ID:</b> Q9QUM4-1	
<b>Isotype:</b> IgG	<b>Full Name:</b> signaling lymphocytic activation molecule family member 1	
<b>Immunogen Catalog Number:</b> EG2787	<b>Calculated MW:</b> 38 kDa	
	<b>Observed MW:</b> 70-90 kDa	

## Applications

<b>Tested Applications:</b> WB, ELISA	<b>Positive Controls:</b> WB : mouse spleen tissue, mouse thymus tissue
<b>Species Specificity:</b> mouse	

## Background Information

Signaling lymphocytic activation molecule (SLAM, also known as SLAMF1 or CD150) is a 70-95 kDa transmembrane glycoprotein that belongs to the immunoglobulin gene superfamily. SLAM is constitutively expressed on peripheral blood memory T-cells, T-cell clones, immature thymocytes and a proportion of B-cells, and is rapidly induced on naive T-cells after activation. SLAM is involved in T cell stimulation and cytokine production, and may play an important role in the regulation of immune responses to pathogens.

## Storage

**Storage:**  
Store at -20°C. Stable for one year after shipment.  
**Storage Buffer:**  
PBS with 0.02% sodium azide and 50% glycerol pH 7.3.  
Aliquoting is unnecessary for -20°C storage

For technical support and original validation data for this product please contact:

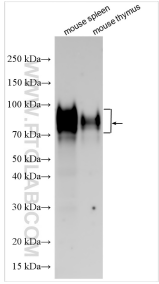
T: 4006900926

E: [Proteintech-CN@ptglab.com](mailto:Proteintech-CN@ptglab.com)

W: [ptgcn.com](http://ptgcn.com)

**This product is exclusively available under Proteintech Group brand and is not available to purchase from any other manufacturer.**

# Selected Validation Data



Various lysates were subjected to SDS PAGE followed by western blot with 32660-1-AP (SLAM/CD150 antibody) at dilution of 1:800 incubated at room temperature for 1.5 hours.