

For Research Use Only

SEC14L2 Polyclonal antibody

Catalog Number: 32593-1-AP



Basic Information

Catalog Number:

32593-1-AP

Concentration:

450 ug/ml

Source:

Rabbit

Isotype:

IgG

Immunogen Catalog Number:

AG35592

GenBank Accession Number:

BC058915

GeneID (NCBI):

23541

UNIPROT ID:

O76054

Full Name:

SEC14-like 2 (S. cerevisiae)

Calculated MW:

46 kDa

Observed MW:

44 kDa

Purification Method:

Antigen affinity Purification

Recommended Dilutions:

WB 1:2000-1:12000

Applications

Tested Applications:

WB, ELISA

Species Specificity:

human, mouse

Positive Controls:

WB : HEK-293T cells, RKO cells, fetal human brain tissue, mouse brain tissue, mouse liver tissue

Background Information

SEC14L2 (SEC14-like lipid-binding protein 2) is a cytoplasmic protein that belongs to the lipid-binding protein family. It plays an important role in a variety of cellular processes, including endosome division and lipid metabolism. SEC14L2 is able to bind phosphatidylinositol (PtdIns) and regulate its intracellular distribution, which is essential for normal endosome division. It has been shown that SEC14L2 regulates the endosome division process by promoting the conversion of PtdIns4P to PtdIns3P. In addition, SEC14L2 plays a role in the cholesterol biosynthesis pathway by stimulating squalene monooxygenase activity. In terms of viral infection, SEC14L2 is essential for hepatitis C virus (HCV) replication, and its expression promotes HCV replication in cells.

Storage

Storage:

Store at -20°C. Stable for one year after shipment.

Storage Buffer:

PBS with 0.02% sodium azide and 50% glycerol, pH7.3

Aliquoting is unnecessary for -20°C storage

For technical support and original validation data for this product please contact:

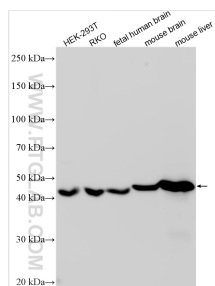
T: 4006900926

E: Proteintech-CN@ptglab.com

W: ptgcn.com

This product is exclusively available under Proteintech Group brand and is not available to purchase from any other manufacturer.

Selected Validation Data



Various lysates were subjected to SDS PAGE followed by western blot with 32593-1-AP (SEC14L2 antibody) at dilution of 1:6000 incubated at room temperature for 1.5 hours.