

For Research Use Only

# EPS8L3 Polyclonal antibody

Catalog Number: 32571-1-AP



## Basic Information

<b>Catalog Number:</b> 32571-1-AP	<b>GenBank Accession Number:</b> NM_001319952.1	<b>Purification Method:</b> Antigen affinity Purification
<b>Concentration:</b> 450 ug/ml	<b>GeneID (NCBI):</b> 79574	<b>Recommended Dilutions:</b> WB 1:5000-1:50000
<b>Source:</b> Rabbit	<b>UNIPROT ID:</b> Q8TE67	
<b>Isotype:</b> IgG	<b>Full Name:</b> EPS8-Like 3	
<b>Immunogen Catalog Number:</b> AG38525	<b>Calculated MW:</b> 67kDa, 593aa	
	<b>Observed MW:</b> 65 kDa	

## Applications

<b>Tested Applications:</b> WB, ELISA	<b>Positive Controls:</b> WB : HepG2 cells,
<b>Species Specificity:</b> human	

## Background Information

EPS8L3 (epidermal growth factor receptor kinase substrate 8-like protein 3) is a member of the EPS8 family, encoding a protein associated with the epidermal growth factor receptor (EGFR) signaling pathway. Studies have shown that EPS8L3 is highly expressed in a variety of tumors, such as hepatocellular carcinoma (HCC), pancreatic cancer, and gastric cancer, and is closely associated with tumor proliferation, migration, and invasive ability. It promotes tumor cell proliferation and inhibits apoptosis by activating GSK3  $\beta$  and PI3K/AKT/mTOR signaling pathways. In addition, high expression of EPS8L3 is associated with poor prognosis in tumor patients and may serve as a biomarker for tumor diagnosis and prognostic assessment. Due to its important role in tumors, EPS8L3 is considered a potential therapeutic target, and its inhibition may enhance the efficacy of multi-target kinase inhibitors.

## Storage

**Storage:**  
Store at -20°C. Stable for one year after shipment.  
**Storage Buffer:**  
PBS with 0.02% sodium azide and 50% glycerol, pH7.3  
Aliquoting is unnecessary for -20°C storage

For technical support and original validation data for this product please contact:

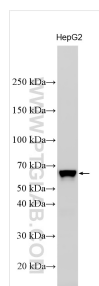
T: 4006900926

E: [Proteintech-CN@ptglab.com](mailto:Proteintech-CN@ptglab.com)

W: [ptgcn.com](http://ptgcn.com)

This product is exclusively available under Proteintech Group brand and is not available to purchase from any other manufacturer.

## Selected Validation Data



Various lysates were subjected to SDS PAGE followed by western blot with 32571-1-AP (EPS8L3 antibody) at dilution of 1:40000 incubated at room temperature for 1.5 hours.