

For Research Use Only

# FAM50B Polyclonal antibody, PBS Only

Catalog Number:32562-1-PBS



## Basic Information

Catalog Number:

32562-1-PBS

Concentration:

1 mg/ml

Source:

Rabbit

Isotype:

IgG

Immunogen Catalog Number:

AG38226

GenBank Accession Number:

NM\_012135.2

GeneID (NCBI):

26240

UNIPROT ID:

Q9Y247

Full Name:

family with sequence similarity 50, member B

Calculated MW:

39kDa, 325aa

Observed MW:

38 kDa

Purification Method:

Antigen affinity Purification

## Applications

Tested Applications:

WB, Indirect ELISA

Species Specificity:

human

## Background Information

FAM50B, also known as family with sequence similarity 50, member B, is a protein-coding gene located on chromosome 6. It is widely expressed in various tissues, with particularly high abundance in the testis and both adult and fetal brain. The exact function of FAM50B is not yet fully understood and is still under investigation.

## Storage

Storage:

Store at -80°C.

The product is shipped with ice packs. Upon receipt, store it immediately at -80°C

Storage Buffer:

PBS only, pH7.3

For technical support and original validation data for this product please contact:

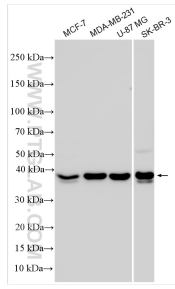
T: 4006900926

E: [Proteintech-CN@ptglab.com](mailto:Proteintech-CN@ptglab.com)

W: [ptgcn.com](http://ptgcn.com)

This product is exclusively available under Proteintech Group brand and is not available to purchase from any other manufacturer.

## Selected Validation Data



Various lysates were subjected to SDS PAGE followed by western blot with 32562-1-AP (FAM50B antibody) at dilution of 1:2000 incubated at room temperature for 1.5 hours. This data was developed using the same antibody clone with 32562-1-PBS in a different storage buffer formulation.