

For Research Use Only

# KREMEN1 Polyclonal antibody

Catalog Number: 32552-1-AP



## Basic Information

Catalog Number:

32552-1-AP

Size:

500 ug/ml

Source:

Rabbit

Isotype:

IgG

Immunogen Catalog Number:

AG37569

GenBank Accession Number:

BC063787

GeneID (NCBI):

83999

UNIPROT ID:

Q96MU8

Full Name:

kringle containing transmembrane protein 1

Calculated MW:

473 aa, 52 kDa

Observed MW:

52 kDa

Purification Method:

Antigen affinity Purification

Recommended Dilutions:

WB 1:500-1:1000

## Applications

Tested Applications:

WB, ELISA

Species Specificity:

human

Positive Controls:

WB : HepG2 cells,

## Background Information

Kremen protein 1 (KREMEN1, also known as KRM1) is a transmembrane protein that is a negative regulator of the Wnt signaling pathway (PMID: 26206087; 18502762). KREMEN1 is one of the alternative functional receptors that play essential roles in ACE2-independent virus entry, providing insight into SARS-CoV-2 tropism and pathogenesis, as well as a community resource and potential therapeutic strategies for further COVID-19 investigations (PMID: 34837059; 34903854).

## Storage

Storage:

Store at -20°C. Stable for one year after shipment.

Storage Buffer:

PBS with 0.02% sodium azide and 50% glycerol pH 7.3.

Aliquoting is unnecessary for -20°C storage

For technical support and original validation data for this product please contact:

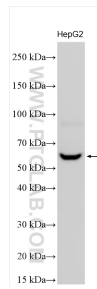
T: 4006900926

E: [Proteintech-CN@ptglab.com](mailto:Proteintech-CN@ptglab.com)

W: [ptgcn.com](http://ptgcn.com)

This product is exclusively available under Proteintech Group brand and is not available to purchase from any other manufacturer.

## Selected Validation Data



Various lysates were subjected to SDS PAGE followed by western blot with 32552-1-AP (KREMEN1 antibody) at dilution of 1:500 incubated at room temperature for 1.5 hours.