

For Research Use Only

# FSTL1 Polyclonal antibody

Catalog Number: 32545-1-AP



## Basic Information

<b>Catalog Number:</b> 32545-1-AP	<b>GenBank Accession Number:</b> NM_024369.2	<b>Purification Method:</b> Antigen affinity Purification
<b>Concentration:</b> 500 µg/ml	<b>GeneID (NCBI):</b> 79210	<b>Recommended Dilutions:</b> WB 1:1000-1:4000
<b>Source:</b> Rabbit	<b>UNIPROT ID:</b> Q62632	
<b>Isotype:</b> IgG	<b>Full Name:</b> follistatin-like 1	
	<b>Calculated MW:</b> 35 kDa	
	<b>Observed MW:</b> 35 kDa	

## Applications

<b>Tested Applications:</b> WB, ELISA	<b>Positive Controls:</b> WB : C6 cells,
<b>Species Specificity:</b> rat	

## Background Information

Follistatin-like protein 1 (FSTL1) is a secreted glycoprotein predominantly produced by mesenchymal cells. It is highly expressed during tissue fibrosis and plays a significant role in various pathological conditions, including inflammation, fibrosis, and immune regulation. It functions as a matricellular protein, interacting with extracellular matrix components and modulating cell-matrix interactions. FSTL1 is involved in multiple biological processes, such as cell proliferation, apoptosis, metabolism, differentiation, and immune response.

## Storage

**Storage:**  
Store at -20°C. Stable for one year after shipment.  
**Storage Buffer:**  
PBS with 0.02% sodium azide and 50% glycerol pH 7.3.  
Aliquoting is unnecessary for -20°C storage

For technical support and original validation data for this product please contact:

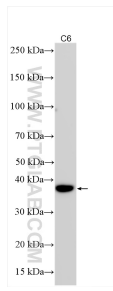
T: 4006900926

E: [Proteintech-CN@ptglab.com](mailto:Proteintech-CN@ptglab.com)

W: [ptgcn.com](http://ptgcn.com)

**This product is exclusively available under Proteintech Group brand and is not available to purchase from any other manufacturer.**

## Selected Validation Data



Various lysates were subjected to SDS PAGE followed by western blot with 32545-1-AP (FSTL1 antibody) at dilution of 1:2000 incubated at room temperature for 1.5 hours.