

For Research Use Only

# GPR56 Polyclonal antibody

Catalog Number: 32532-1-AP



## Basic Information

Catalog Number:

32532-1-AP

Concentration:

500 ug/ml

Source:

Rabbit

Isotype:

IgG

GenBank Accession Number:

NM\_001145771.2

GeneID (NCBI):

9289

UNIPROT ID:

Q9Y653

Full Name:

G protein-coupled receptor 56

Calculated MW:

78 kDa

Observed MW:

65-70 kDa

Purification Method:

Antigen affinity Purification

Recommended Dilutions:

WB 1:1000-1:4000

## Applications

Tested Applications:

WB, ELISA

Species Specificity:

human

Positive Controls:

WB : A549 cells, Calu-1 cells, K-562 cells, U-87 MG cells

## Background Information

GPR56, also known as ADGRG1, is a member of the adhesion G protein-coupled receptor (aGPCR) family. These receptors are characterized by an extended extracellular region with a GPCR autoproteolysis inducing (GAIN) domain (PMID: 37980704). GPR56 is widely expressed in various tissues, including the liver, muscle, tendon, neural cells, and cytotoxic lymphoid cells in humans. It plays crucial roles in multiple biological processes such as cell guidance, adhesion, and development.

## Storage

Storage:

Store at -20°C. Stable for one year after shipment.

Storage Buffer:

PBS with 0.02% sodium azide and 50% glycerol pH 7.3.

Aliquoting is unnecessary for -20°C storage

For technical support and original validation data for this product please contact:

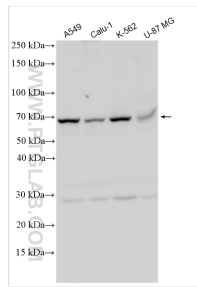
T: 4006900926

E: [Proteintech-CN@ptglab.com](mailto:Proteintech-CN@ptglab.com)

W: [ptgcn.com](http://ptgcn.com)

This product is exclusively available under Proteintech Group brand and is not available to purchase from any other manufacturer.

## Selected Validation Data



Various lysates were subjected to SDS PAGE followed by western blot with 32532-1-AP (GPR56 antibody) at dilution of 1:2000 incubated at room temperature for 1.5 hours.