

For Research Use Only

# KCTD7 Polyclonal antibody

Catalog Number: 32488-1-AP



## Basic Information

Catalog Number:

32488-1-AP

Size:

400 ug/ml

Source:

Rabbit

Isotype:

IgG

Immunogen Catalog Number:

AG35756

GenBank Accession Number:

NM\_153033.4

GeneID (NCBI):

154881

UNIPROT ID:

Q96MP8

Full Name:

potassium channel tetramerisation domain containing 7

Calculated MW:

33 kDa, 289 aa

Observed MW:

62 kDa

Purification Method:

Antigen affinity Purification

Recommended Dilutions:

WB 1:500-1:2000

## Applications

Tested Applications:

WB, ELISA

Species Specificity:

human

Positive Controls:

WB : human placenta tissue, human testis tissue

## Background Information

KCTD7, or Potassium Channel Tetramerization Domain Containing 7, is a member of the KCTD family of proteins. The role of KCTD7 in regulating autophagy-lysosome pathways, which are essential for cellular homeostasis and response to nutrient stress (PMID: 36964131). It has been implicated in several neurodegenerative disorders, particularly progressive myoclonic epilepsy (PME) and neuronal ceroid lipofuscinosis (NCL). The deficiency of KCTD7 results in the accumulation of lipofuscin and lipid droplets, which are hallmarks of NCL (PMID: 33970744). The 62 kDa form most likely corresponds to an SDS-stable dimer (PMID: 22748208).

## Storage

Storage:

Store at -20°C. Stable for one year after shipment.

Storage Buffer:

PBS with 0.02% sodium azide and 50% glycerol pH 7.3.

Aliquoting is unnecessary for -20°C storage

For technical support and original validation data for this product please contact:

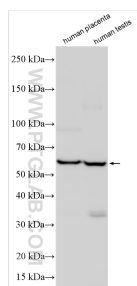
T: 4006900926

E: [Proteintech-CN@ptglab.com](mailto:Proteintech-CN@ptglab.com)

W: [ptgcn.com](http://ptgcn.com)

This product is exclusively available under Proteintech Group brand and is not available to purchase from any other manufacturer.

## Selected Validation Data



Various lysates were subjected to SDS PAGE followed by western blot with 32488-1-AP (KCTD7 antibody) at dilution of 1:1000 incubated at room temperature for 1.5 hours.