

For Research Use Only

# EDARADD Polyclonal antibody, PBS Only

Catalog Number: 32485-1-PBS



## Basic Information

<b>Catalog Number:</b> 32485-1-PBS	<b>GenBank Accession Number:</b> BC128082	<b>Purification Method:</b> Antigen affinity Purification
<b>Concentration:</b> 1 mg/ml	<b>GeneID (NCBI):</b> 128178	
<b>Source:</b> Rabbit	<b>UNIPROT ID:</b> Q8WWZ3	
<b>Isotype:</b> IgG	<b>Full Name:</b> EDAR-associated death domain	
<b>Immunogen Catalog Number:</b> AG38064	<b>Observed MW:</b> 24 kDa	

## Applications

**Tested Applications:**  
WB, Indirect ELISA

**Species Specificity:**  
human

## Background Information

EDARADD (EDAR-associated death domain) is an adaptor protein that mediates the interaction between the extracellular Ectodysplasin A receptor (EDAR) and intracellular signaling components, orchestrating a series of downstream events that regulate key biological processes such as cell proliferation, differentiation, and apoptosis. EDARADD is a 25 KDa death domain-containing adaptor protein. EDARADD was shown to interact with TRAF1, -2 and -3 as well as with TAB2 (TAK1-binding protein 2) and is therefore likely to be responsible for coupling receptor activation with engagement of the NF- $\kappa$ B pathway (PMID: 23845861).

## Storage

**Storage:**  
Store at -80°C.  
**The product is shipped with ice packs. Upon receipt, store it immediately at -80°C**

**Storage Buffer:**  
PBS only, pH7.3

For technical support and original validation data for this product please contact:

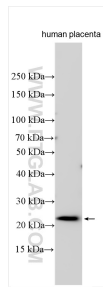
T: 4006900926

E: Proteintech-CN@ptglab.com

W: ptgcn.com

**This product is exclusively available under Proteintech Group brand and is not available to purchase from any other manufacturer.**

## Selected Validation Data



Various lysates were subjected to SDS PAGE followed by western blot with 32485-1-AP (EDARADD antibody) at dilution of 1:6000 incubated at room temperature for 1.5 hours. This data was developed using the same antibody clone with 32485-1-PBS in a different storage buffer formulation.