

For Research Use Only

IPO8 Polyclonal antibody, PBS Only

Catalog Number: 32476-1-PBS



Basic Information

Catalog Number: 32476-1-PBS	GenBank Accession Number: BC167853	Purification Method: Antigen affinity Purification
Concentration: 1 mg/ml	GeneID (NCBI): 10526	
Source: Rabbit	UNIPROT ID: O15397	
Isotype: IgG	Full Name: importin 8	
Immunogen Catalog Number: AG35395	Observed MW: 120-125 kDa	

Applications

Tested Applications:
WB, Indirect ELISA

Species Specificity:
human, mouse

Background Information

IPO8(Importin 8) is a gene encoding protein, which is located on human chromosome 12. It belongs to the nuclear protein transport family, and is mainly involved in the process of nuclear protein introduction. IPO8 regulates the transport function of nuclear pore complex by interacting with Ran GTPase and other proteins (PMID: 11682607). It is expected to be located in the cytoplasm and nucleus. IPO8 is associated with many diseases, including VISS syndrome and Loey-Dietz syndrome. These diseases usually involve cardiovascular defects, skeletal abnormalities and immune loss. The molecular weight of PO8 protein is about 125kDa, and its structure includes helix and β - sheet. It has a specific three-dimensional structure and can form complexes with other protein.

Storage

Storage:
Store at -80°C.
The product is shipped with ice packs. Upon receipt, store it immediately at -80°C

Storage Buffer:
PBS only, pH7.3

For technical support and original validation data for this product please contact:

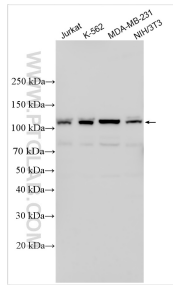
T: 4006900926

E: Proteintech-CN@ptglab.com

W: ptgcn.com

This product is exclusively available under Proteintech Group brand and is not available to purchase from any other manufacturer.

Selected Validation Data



Various lysates were subjected to SDS PAGE followed by western blot with 32476-1-AP (IPO8 antibody) at dilution of 1:3000 incubated at room temperature for 1.5 hours. This data was developed using the same antibody clone with 32476-1-PBS in a different storage buffer formulation.