

For Research Use Only

PLXND1 Polyclonal antibody

Catalog Number: 32470-1-AP



Basic Information

Catalog Number:

32470-1-AP

Size:

350 µg/ml

Source:

Rabbit

Isotype:

IgG

Immunogen Catalog Number:

AG38374

GenBank Accession Number:

NM_015103.2

GeneID (NCBI):

23129

UNIPROT ID:

Q9Y4D7

Full Name:

plexin D1

Calculated MW:

212kDa, 1925aa

Observed MW:

220-250

Purification Method:

Antigen affinity Purification

Recommended Dilutions:

WB 1:500-1:2000

Applications

Tested Applications:

WB, ELISA

Species Specificity:

human

Positive Controls:

WB : JAR cells,

Background Information

PLXND1, also known as KIAA0620. It is predicted to be located in the cell membrane. Detected at low levels in heart, placenta, lung, skeletal muscle, kidney, thymus and liver. It is a cell surface receptor for SEMA4A and for class 3 semaphorins, such as SEMA3A, SEMA3C and SEMA3E, which plays an important role in cell-cell signaling, and in regulating the migration of a wide spectrum of cell types. Regulates the migration of thymocytes in the medulla. The protein regulates endothelial cell migration. The molecular weight of PLXND1 is 212 kDa, and the target also has phosphorylation modification as well.

Storage

Storage:

Store at -20°C. Stable for one year after shipment.

Storage Buffer:

PBS with 0.02% sodium azide and 50% glycerol pH 7.3.

Aliquoting is unnecessary for -20°C storage

For technical support and original validation data for this product please contact:

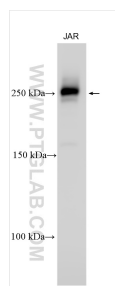
T: 4006900926

E: Proteintech-CN@ptglab.com

W: ptgcn.com

This product is exclusively available under Proteintech Group brand and is not available to purchase from any other manufacturer.

Selected Validation Data



Various lysates were subjected to SDS PAGE followed by western blot with 32470-1-AP (PLXND1 antibody) at dilution of 1:1000 incubated at room temperature for 1.5 hours.