

For Research Use Only

LRRC37A2 Polyclonal antibody, PBS Only

Catalog Number: 32450-1-PBS



Basic Information

Catalog Number:

32450-1-PBS

Concentration:

1 mg/ml

Source:

Rabbit

Isotype:

IgG

Immunogen Catalog Number:

AG36343

GenBank Accession Number:

NM_001006607

GeneID (NCBI):

474170

UNIPROT ID:

A6NM11

Full Name:

leucine rich repeat containing 37, member A2

Calculated MW:

188 kDa

Purification Method:

Antigen affinity Purification

Applications

Tested Applications:

IHC, Indirect ELISA

Species Specificity:

human, mouse

Background Information

LRRC37A2, or Leucine-Rich Repeat-Containing Protein 37A2, is a protein encoded by the LRRC37A2 gene in humans. It belongs to the leucine-rich repeat (LRR) family, which is involved in protein-protein interactions and various cellular processes. The specific function of LRRC37A2 is not yet fully understood, but it is thought to play a role in immune response, cell signaling, and possibly neurodevelopment.

Storage

Storage:

Store at -80°C.

The product is shipped with ice packs. Upon receipt, store it immediately at -80°C

Storage Buffer:

PBS only, pH7.3

For technical support and original validation data for this product please contact:

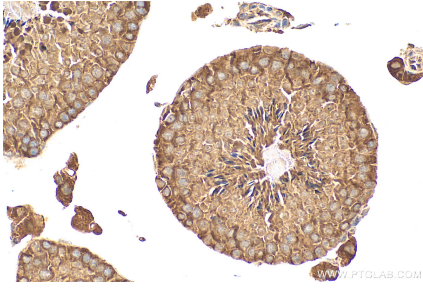
T: 4006900926

E: Proteintech-CN@ptglab.com

W: ptgcn.com

This product is exclusively available under Proteintech Group brand and is not available to purchase from any other manufacturer.

Selected Validation Data



Immunohistochemical analysis of paraffin-embedded mouse testis tissue slide using 32450-1-AP (LRRC37A2 antibody) at dilution of 1:200 (under 40x lens). Heat mediated antigen retrieval with Tris-EDTA buffer (pH 9.0). This data was developed using the same antibody clone with 32450-1-PBS in a different storage buffer formulation.