

For Research Use Only

# EMR2 Polyclonal antibody

Catalog Number: 32405-1-AP



## Basic Information

Catalog Number:

32405-1-AP

Size:

550 ug/ml

Source:

Rabbit

Isotype:

IgG

GenBank Accession Number:

NM\_013447.4

GeneID (NCBI):

30817

UNIPROT ID:

Q9UHX3-1

Full Name:

egf-like module containing, mucin-like, hormone receptor-like 2

Calculated MW:

90 kDa

Observed MW:

75-90 kDa

Purification Method:

Antigen affinity Purification

Recommended Dilutions:

WB 1:1000-1:8000

## Applications

Tested Applications:

WB, ELISA

Species Specificity:

human

Positive Controls:

WB : HeLa cells,

## Background Information

EMR2 (Epidermal Growth Factor-like module-containing Mucin-like Hormone Receptor 2), also known as ADGRE2, is a member of the adhesion-GPCR family that contains extracellular EGF-like domains. EMR2 contains a total of five tandem EGF-like domains and expresses similar protein isoforms consisting of various numbers of EGF-like domains as a result of alternative RNA splicing (PMID: 10903844). EMR2 is restricted to myeloid cells including monocytes, macrophages, dendritic cells and granulocytes<sup>28</sup> and its expression is highly regulated during monocyte/macrophage differentiation (PMID: 31969668). The ligation of EMR2 could increase neutrophil adhesion, migration and anti-microbial mediator production and could enhance the systemic inflammation (PMID: 27905560).

## Storage

Storage:

Store at -20°C. Stable for one year after shipment.

Storage Buffer:

PBS with 0.02% sodium azide and 50% glycerol pH 7.3.

Aliquoting is unnecessary for -20°C storage

For technical support and original validation data for this product please contact:

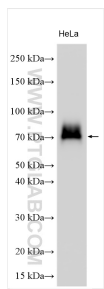
T: 4006900926

E: [Proteintech-CN@ptglab.com](mailto:Proteintech-CN@ptglab.com)

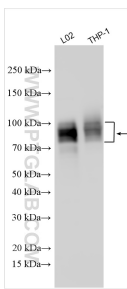
W: [ptgcn.com](http://ptgcn.com)

This product is exclusively available under Proteintech Group brand and is not available to purchase from any other manufacturer.

## Selected Validation Data



Various lysates were subjected to SDS PAGE followed by western blot with 32405-1-AP (EMR2 antibody) at dilution of 1:4000 incubated at room temperature for 1.5 hours.



Various lysates were subjected to SDS PAGE followed by western blot with 32405-1-AP (EMR2 antibody) at dilution of 1:4000 incubated at room temperature for 1.5 hours.