

# SLC7A11/xCT Polyclonal antibody

Catalog Number: 32384-1-AP

## Basic Information

**Catalog Number:**

32384-1-AP

**Concentration:**

400 µg/ml

**Source:**

Rabbit

**Isotype:**

IgG

**Immunogen Catalog Number:**

AG38215

**GenBank Accession Number:**

NM\_011990

**GeneID (NCBI):**

26570

**UNIPROT ID:**

Q9WTR6

**Full Name:**solute carrier family 7 (cationic amino acid transporter, y<sup>+</sup> system), member 11**Calculated MW:**

55 kDa

**Observed MW:**

70 kDa, 45 kDa

**Purification Method:**

Antigen affinity Purification

**Recommended Dilutions:**

WB 1:500-1:3000

IF-P 1:50-1:500

## Applications

**Tested Applications:**

WB, IF-P, ELISA

**Species Specificity:**

human, mouse, rat

**Positive Controls:**

WB : mouse brain tissue, HEK-293 cells, HeLa cells, HepG2 cells, rat brain tissue, mouse kidney tissue, mouse stomach tissue, rat liver tissue

IF-P : mouse eye tissue,

## Background Information

SLC7A11 (also known as xCT) is a membrane transporter involved in cysteine uptake. It promotes glutathione synthesis through cystine uptake and the concomitant release of glutamate. This, in turn, protects cells from oxidative stress, maintains cellular redox balance, and prevents cell death induced by lipid peroxidation. SLC7A11 has been identified as a potential target for cancer therapeutics. It is overexpressed in multiple malignant tumors and is closely associated with the growth, prognosis, metastasis, and treatment response of various cancers, including lung cancer. Although different from the predicted size of 55 kDa, the 45- and 70-kDa bands represent xCT, most likely a monomer and homodimer of the protein (PMID: 16399997).

## Storage

**Storage:**

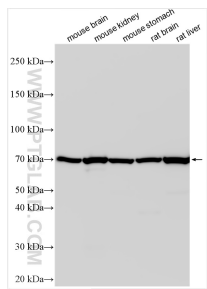
Store at -20°C. Stable for one year after shipment.

**Storage Buffer:**

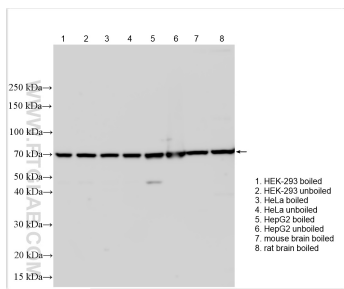
PBS with 0.02% sodium azide and 50% glycerol pH 7.3.

Aliquoting is unnecessary for -20°C storage

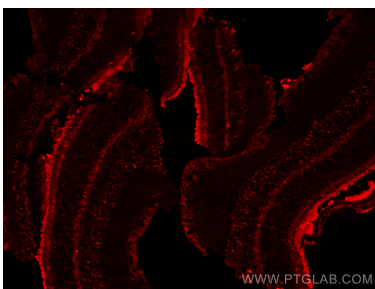
## Selected Validation Data



Various lysates were subjected to SDS PAGE followed by western blot with 32384-1-AP (SLC7A11/xCT antibody) at dilution of 1:1500 incubated at room temperature for 1.5 hours.



Various lysates were subjected to SDS PAGE followed by western blot with 32384-1-AP (SLC7A11/xCT antibody) at dilution of 1:1500 incubated at room temperature for 1.5 hours.



Immunofluorescent analysis of (4% PFA) fixed paraffin-embedded mouse eye tissue using SLC7A11/xCT antibody (32384-1-AP) at dilution of 1:200 and CoraLite®594-Conjugated Goat Anti-Rabbit IgG(H+L) (SA00013-4). Heat mediated antigen retrieval with Tris-EDTA buffer (pH 9.0).