

For Research Use Only

CFHR5 Polyclonal antibody, PBS Only

Catalog Number: 32379-1-PBS



Basic Information

| | | |
|---|--|--|
| Catalog Number: 32379-1-PBS | GenBank Accession Number: BC111773 | Purification Method: Antigen affinity Purification |
| Concentration: 1 mg/ml | GeneID (NCBI): 81494 | |
| Source: Rabbit | UNIPROT ID: Q9BXR6 | |
| Isotype: IgG | Full Name: complement factor H-related 5 | |
| Immunogen Catalog Number: AG37714 | Calculated MW: 569 aa, 64 kDa | |
| | Observed MW: 60 kDa | |

Applications

Tested Applications:
WB, Indirect ELISA

Species Specificity:
human

Background Information

Complement factor H-related protein 5 (CFHR5) is a member of the complement factor H (CFH) gene cluster located on chromosome 1. This protein is composed of nine short consensus repeats (SCRs), which are characteristic of regulators of complement activation. It co-localizes with C3 and binds to C3b in a dose-dependent manner, being recruited to tissues damaged by C-reactive protein.

Storage

Storage:
Store at -80°C.
The product is shipped with ice packs. Upon receipt, store it immediately at -80°C

Storage Buffer:
PBS only, pH7.3

For technical support and original validation data for this product please contact:

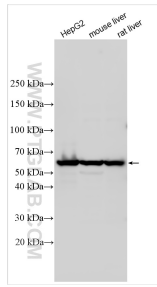
T: 4006900926

E: Proteintech-CN@ptglab.com

W: ptgcn.com

This product is exclusively available under Proteintech Group brand and is not available to purchase from any other manufacturer.

Selected Validation Data



Various lysates were subjected to SDS PAGE followed by western blot with 32379-1-AP (CFHR5 antibody) at dilution of 1:4000 incubated at room temperature for 1.5 hours. This data was developed using the same antibody clone with 32379-1-PBS in a different storage buffer formulation.