

For Research Use Only

ELA3B Polyclonal antibody

Catalog Number: 32376-1-AP



Basic Information

Catalog Number:

32376-1-AP

Concentration:

550 ug/ml

Source:

Rabbit

Isotype:

IgG

Immunogen Catalog Number:

AG36965

GenBank Accession Number:

BC005216

GeneID (NCBI):

23436

UNIPROT ID:

P08861

Full Name:

elastase 3B, pancreatic

Calculated MW:

29 kDa

Observed MW:

29-32 kDa

Purification Method:

Antigen affinity Purification

Recommended Dilutions:

WB 1:2000-1:16000

Applications

Tested Applications:

WB, ELISA

Species Specificity:

human, mouse, rat

Positive Controls:

WB : mouse pancreas tissue, rat pancreas tissue

Background Information

ELA3B, or elastase 3B, is a protein encoded by the human ELA3B gene. It belongs to the elastase family of serine proteases, which are enzymes that cleave peptide bonds in proteins. ELA3B is mainly expressed in the pancreas and is involved in the digestion of dietary proteins. Like other elastases, it plays a role in the degradation of elastin, a key component of connective tissue, as well as other extracellular matrix proteins.

Storage

Storage:

Store at -20°C. Stable for one year after shipment.

Storage Buffer:

PBS with 0.02% sodium azide and 50% glycerol pH 7.3.

Aliquoting is unnecessary for -20°C storage

For technical support and original validation data for this product please contact:

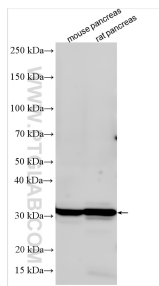
T: 4006900926

E: Proteintech-CN@ptglab.com

W: ptgcn.com

This product is exclusively available under Proteintech Group brand and is not available to purchase from any other manufacturer.

Selected Validation Data



Various lysates were subjected to SDS PAGE followed by western blot with 32376-1-AP (ELA3B antibody) at dilution of 1:8000 incubated at room temperature for 1.5 hours.