

For Research Use Only

# MOSPD1 Polyclonal antibody, PBS Only

Catalog Number:32307-1-PBS



## Basic Information

<b>Catalog Number:</b> 32307-1-PBS	<b>GenBank Accession Number:</b> BC005700	<b>Purification Method:</b> Antigen affinity Purification
<b>Concentration:</b> 1 mg/ml	<b>GeneID (NCBI):</b> 56180	
<b>Source:</b> Rabbit	<b>UNIPROT ID:</b> Q9UJG1	
<b>Isotype:</b> IgG	<b>Full Name:</b> motile sperm domain containing 1	
<b>Immunogen Catalog Number:</b> AG37532	<b>Calculated MW:</b> 24 kDa	
	<b>Observed MW:</b> 25 kDa	

## Applications

**Tested Applications:**  
WB, IHC, Indirect ELISA

**Species Specificity:**  
human

## Background Information

MOSPD1, or Motile Sperm Domain-Containing Protein 1, is a protein that has been implicated in various biological processes. It is part of a family of proteins characterized by the presence of the major sperm protein domain and two transmembrane domains (PMID: 21792907). The protein is primarily located in the endoplasmic reticulum and Golgi apparatus, and it can also be found in the nucleus under certain conditions. MOSPD1 plays a significant role in the differentiation and proliferation of mesenchymal stem cells (MSCs). Studies have shown that MOSPD1-null embryonic stem cells exhibit impaired differentiation into various cell lineages, including osteoblasts and adipocytes, indicating its importance in MSC proliferation and differentiation (PMID: 26175344). Additionally, MOSPD1 is involved in the switch between mesenchymal and epithelial cells, suggesting its role in developmental regulation.

## Storage

**Storage:**  
Store at -80°C.  
**The product is shipped with ice packs. Upon receipt, store it immediately at -80°C**

**Storage Buffer:**  
PBS only, pH7.3

For technical support and original validation data for this product please contact:

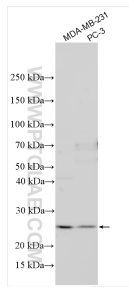
T: 4006900926

E: [Proteintech-CN@ptglab.com](mailto:Proteintech-CN@ptglab.com)

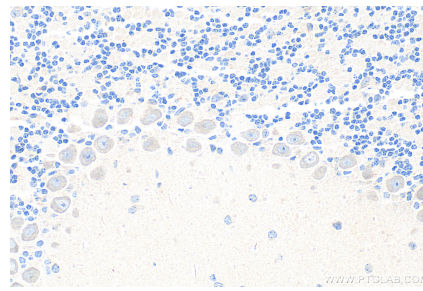
W: [ptgcn.com](http://ptgcn.com)

**This product is exclusively available under Proteintech Group brand and is not available to purchase from any other manufacturer.**

## Selected Validation Data



Various lysates were subjected to SDS PAGE followed by western blot with 32307-1-AP (MOSPD1 antibody) at dilution of 1:1500 incubated at room temperature for 1.5 hours. This data was developed using the same antibody clone with 32307-1-PBS in a different storage buffer formulation.



Immunohistochemical analysis of paraffin-embedded mouse cerebellum tissue slide using 32307-1-AP (MOSPD1 antibody) at dilution of 1:200 (under 40x lens). Heat mediated antigen retrieval with Tris-EDTA buffer (pH 9.0). This data was developed using the same antibody clone with 32307-1-PBS in a different storage buffer formulation.