

MOSPD1 Polyclonal antibody

Catalog Number: 32307-1-AP

Basic Information

Catalog Number:

32307-1-AP

Concentration:

350 ug/ml

Source:

Rabbit

Isotype:

IgG

Immunogen Catalog Number:

AG37532

GenBank Accession Number:

BC005700

GeneID (NCBI):

56180

UNIPROT ID:

Q9UJG1

Full Name:

motile sperm domain containing 1

Calculated MW:

24 kDa

Observed MW:

25 kDa

Purification Method:

Antigen affinity Purification

Recommended Dilutions:

WB 1:500-1:3000

IHC 1:50-1:200

Applications

Tested Applications:

WB, IHC, ELISA

Species Specificity:

human

Positive Controls:

WB : MDA-MB-231 cells, PC-3 cells

IHC : mouse cerebellum tissue,

Note-IHC: suggested antigen retrieval with TE buffer pH 9.0; (*) Alternatively, antigen retrieval may be performed with citrate buffer pH 6.0

Background Information

MOSPD1, or Motile Sperm Domain-Containing Protein 1, is a protein that has been implicated in various biological processes. It is part of a family of proteins characterized by the presence of the major sperm protein domain and two transmembrane domains (PMID: 21792907). The protein is primarily located in the endoplasmic reticulum and Golgi apparatus, and it can also be found in the nucleus under certain conditions. MOSPD1 plays a significant role in the differentiation and proliferation of mesenchymal stem cells (MSCs). Studies have shown that MOSPD1-null embryonic stem cells exhibit impaired differentiation into various cell lineages, including osteoblasts and adipocytes, indicating its importance in MSC proliferation and differentiation (PMID: 26175344). Additionally, MOSPD1 is involved in the switch between mesenchymal and epithelial cells, suggesting its role in developmental regulation.

Storage

Storage:

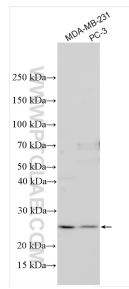
Store at -20°C. Stable for one year after shipment.

Storage Buffer:

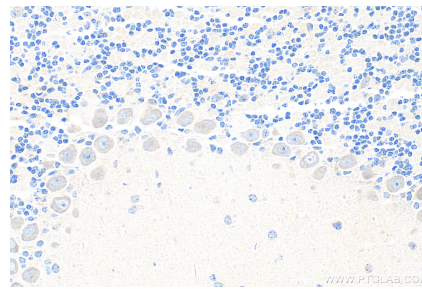
PBS with 0.02% sodium azide and 50% glycerol, pH7.3

Aliquoting is unnecessary for -20°C storage

Selected Validation Data



Various lysates were subjected to SDS PAGE followed by western blot with 32307-1-AP (MOSPD1 antibody) at dilution of 1:1500 incubated at room temperature for 1.5 hours.



Immunohistochemical analysis of paraffin-embedded mouse cerebellum tissue slide using 32307-1-AP (MOSPD1 antibody) at dilution of 1:200 (under 40x lens). Heat mediated antigen retrieval with Tris-EDTA buffer (pH 9.0).