

For Research Use Only

MESP1 Polyclonal antibody, PBS Only

Catalog Number: 32304-1-PBS



Basic Information

Catalog Number:

32304-1-PBS

Source:

Rabbit

Isotype:

IgG

Immunogen Catalog Number:

AG38017

GenBank Accession Number:

BC006219

GeneID (NCBI):

55897

UNIPROT ID:

Q9BRJ9

Full Name:

mesoderm posterior 1 homolog
(mouse)

Calculated MW:

268 aa, 29 kDa

Observed MW:

31 kDa

Purification Method:

Antigen affinity Purification

Applications

Tested Applications:

WB, Indirect ELISA

Species Specificity:

human, rat

Background Information

MESP1 is a transiently expressed bHLH transcription factor that serves as a master regulator of mesoderm formation and cardiac lineage specification during early embryogenesis. By activating core cardiovascular transcriptional networks and promoting mesodermal cell migration, MESP1 establishes the foundation for heart development. Perturbation of MESP1 function leads to defective mesoderm patterning and congenital heart disease, underscoring its pivotal role in early developmental programming.

Storage

Storage:

Store at -80°C.

The product is shipped with ice packs. Upon receipt, store it immediately at -80°C

Storage Buffer:

PBS only, pH7.3

For technical support and original validation data for this product please contact:

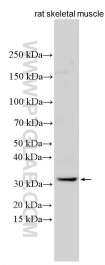
T: 4006900926

E: Proteintech-CN@ptglab.com

W: ptgcn.com

This product is exclusively available under Proteintech Group brand and is not available to purchase from any other manufacturer.

Selected Validation Data



Rat skeletal muscle tissue lysates were subjected to SDS PAGE followed by western blot with 32304-1-AP (MESP1 antibody) at dilution of 1:600 incubated at room temperature for 1.5 hours. This data was developed using the same antibody clone with 32304-1-PBS in a different storage buffer formulation.