

For Research Use Only

LRRC57 Polyclonal antibody, PBS Only

Catalog Number:32285-1-PBS



Basic Information

Catalog Number:

32285-1-PBS

Size:

1 mg/ml

Source:

Rabbit

Isotype:

IgG

Immunogen Catalog Number:

AG36790

GenBank Accession Number:

BC058935

GeneID (NCBI):

255252

UNIPROT ID:

Q8N9N7

Full Name:

leucine rich repeat containing 57

Observed MW:

27 kDa

Purification Method:

Antigen affinity Purification

Applications

Tested Applications:

WB, Indirect ELISA

Species Specificity:

human

Background Information

Increased expression of the LRRC57 (Leucine-rich repeat containing 57) gene has been associated with bipolar disorder. The other functions of LRRC57 are not fully understood, but it plays a role in a number of cellular processes, including cell proliferation, signaling, and metabolism.

Storage

Storage:

Store at -80°C.

The product is shipped with ice packs. Upon receipt, store it immediately at -80°C

Storage Buffer:

PBS Only

For technical support and original validation data for this product please contact:

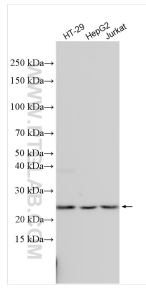
T: 4006900926

E: Proteintech-CN@ptglab.com

W: ptgcn.com

This product is exclusively available under Proteintech Group brand and is not available to purchase from any other manufacturer.

Selected Validation Data



Various lysates were subjected to SDS PAGE followed by western blot with 32285-1-AP (LRRC57 antibody) at dilution of 1:2000 incubated at room temperature for 1.5 hours. This data was developed using the same antibody clone with 32285-1-PBS in a different storage buffer formulation.