

For Research Use Only

# SAV1 Polyclonal antibody, PBS Only

Catalog Number: 32277-1-PBS



## Basic Information

Catalog Number:

32277-1-PBS

Concentration:

1 mg/ml

Source:

Rabbit

Isotype:

IgG

Immunogen Catalog Number:

AG36278

GenBank Accession Number:

BC020537

GeneID (NCBI):

60485

UNIPROT ID:

Q9H4B6

Full Name:

salvador homolog 1 (Drosophila)

Calculated MW:

383 aa, 45 kDa

Observed MW:

45 kDa

Purification Method:

Antigen affinity Purification

## Applications

Tested Applications:

WB, IHC, IF/ICC, Indirect ELISA

Species Specificity:

human, mouse, rat

## Background Information

The Salvador family WW domain - containing 1 (SAV1, also known as WW45) is a human homologue of Salvador that contains two protein - protein interaction modules known as WW domains and acts as a scaffolding protein (PMID: 28618450). SAV1 belongs to the core kinase components of Hippo signalling pathway for efficient MST1/2 activation. SAV1 represses the growth of colorectal cancer cells by inactivating Akt - mTOR signalling in a YAP - dependent manner (PMID: 29063833, 22185343).

## Storage

Storage:

Store at -80°C.

**The product is shipped with ice packs. Upon receipt, store it immediately at -80°C**

Storage Buffer:

PBS Only

For technical support and original validation data for this product please contact:

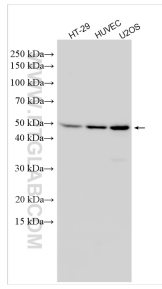
T: 4006900926

E: [Proteintech-CN@ptglab.com](mailto:Proteintech-CN@ptglab.com)

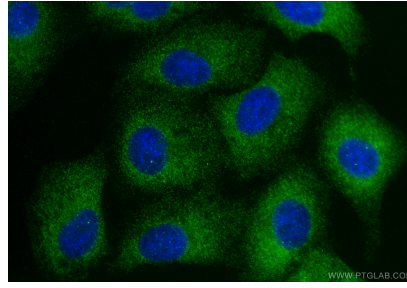
W: [ptgcn.com](http://ptgcn.com)

**This product is exclusively available under Proteintech Group brand and is not available to purchase from any other manufacturer.**

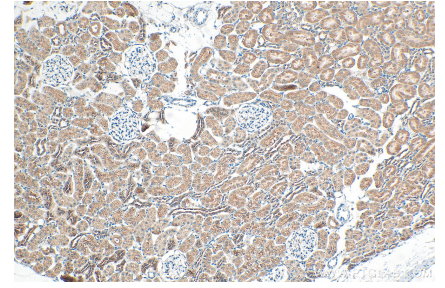
## Selected Validation Data



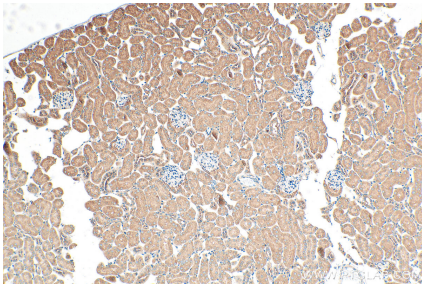
Various lysates were subjected to SDS PAGE followed by western blot with 32277-1-AP (SAV1 antibody) at dilution of 1:1000 incubated at room temperature for 1.5 hours. This data was developed using the same antibody clone with 32277-1-PBS in a different storage buffer formulation.



Immunofluorescent analysis of (4% PFA) fixed A549 cells using SAV1 antibody (32277-1-AP) at dilution of 1:200 and CoraLite@488-Conjugated Goat Anti-Rabbit IgG(H+L) (SA00013-2). This data was developed using the same antibody clone with 32277-1-PBS in a different storage buffer formulation.



Immunohistochemical analysis of paraffin-embedded rat kidney tissue slide using 32277-1-AP (SAV1 antibody) at dilution of 1:200 (under 10x lens). Heat mediated antigen retrieval with Tris-EDTA buffer (pH 9.0). This data was developed using the same antibody clone with 32277-1-PBS in a different storage buffer formulation.



Immunohistochemical analysis of paraffin-embedded mouse kidney tissue slide using 32277-1-AP (SAV1 antibody) at dilution of 1:200 (under 10x lens). Heat mediated antigen retrieval with Tris-EDTA buffer (pH 9.0). This data was developed using the same antibody clone with 32277-1-PBS in a different storage buffer formulation.