

For Research Use Only

# SLC35F4 Polyclonal antibody, PBS Only

Catalog Number: 32258-1-PBS

Featured Product



## Basic Information

Catalog Number:

32258-1-PBS

Concentration:

1 mg/ml

Source:

Rabbit

Isotype:

IgG

Immunogen Catalog Number:

AG34518

GenBank Accession Number:

NM\_001206920

GeneID (NCBI):

341880

UNIPROT ID:

A4IF30

Full Name:

solute carrier family 35, member F4

Calculated MW:

521 aa, 58 kDa

Observed MW:

42 kDa, 65 kDa

Purification Method:

Antigen affinity Purification

## Applications

Tested Applications:

WB, Indirect ELISA

Species Specificity:

human

## Background Information

### Storage

Storage:

Store at -80°C.

The product is shipped with ice packs. Upon receipt, store it immediately at -80°C

Storage Buffer:

PBS Only

For technical support and original validation data for this product please contact:

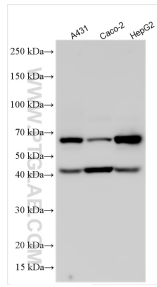
T: 4006900926

E: [Proteintech-CN@ptglab.com](mailto:Proteintech-CN@ptglab.com)

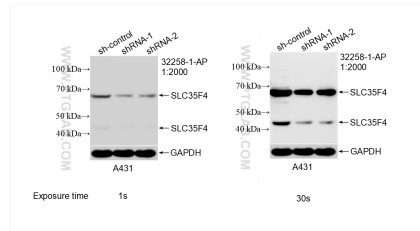
W: [ptgcn.com](http://ptgcn.com)

This product is exclusively available under Proteintech Group brand and is not available to purchase from any other manufacturer.

## Selected Validation Data



Various lysates were subjected to SDS PAGE followed by western blot with 32258-1-AP (SLC35F4 antibody) at dilution of 1:2000 incubated at room temperature for 1.5 hours. This data was developed using the same antibody clone with 32258-1-PBS in a different storage buffer formulation.



WB result of SLC35F4 antibody (32258-1-AP; 1:2000; incubated at room temperature for 1.5 hours) with sh-Control and sh-SLC35F4 transfected A431 cells. This data was developed using the same antibody clone with 32258-1-PBS in a different storage buffer formulation.