

For Research Use Only

CRYGD Polyclonal antibody, PBS Only

Catalog Number: 32233-1-PBS



Basic Information

Catalog Number:

32233-1-PBS

Source:

Rabbit

Isotype:

IgG

Immunogen Catalog Number:

AG37473

GenBank Accession Number:

NM_006891.3

GeneID (NCBI):

1421

UNIPROT ID:

P07320

Full Name:

crystallin, gamma D

Calculated MW:

21kDa, 174aa

Observed MW:

18 kDa

Purification Method:

Antigen affinity Purification

Applications

Tested Applications:

WB, Indirect ELISA

Species Specificity:

human, mouse, rat

Background Information

CRYGD (Crystallin Gamma D) is a structural protein predominantly expressed in the lens of the eye. It plays a critical role in maintaining lens transparency and refractive index. Mutations in the CRYGD gene are associated with inherited forms of congenital cataracts, making it a genetic target for studying lens development and cataract pathogenesis. It is not a conventional therapeutic drug target but serves as a key marker in ocular disease research.

Storage

Storage:

Store at -80°C.

The product is shipped with ice packs. Upon receipt, store it immediately at -80°C

Storage Buffer:

PBS only, pH7.3

For technical support and original validation data for this product please contact:

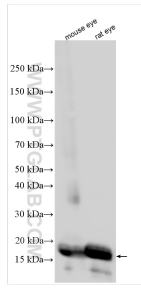
T: 4006900926

E: Proteintech-CN@ptglab.com

W: ptgcn.com

This product is exclusively available under Proteintech Group brand and is not available to purchase from any other manufacturer.

Selected Validation Data



Various lysates were subjected to SDS PAGE followed by western blot with 32233-1-AP (CRYGD antibody) at dilution of 1:40000 incubated at room temperature for 1.5 hours. This data was developed using the same antibody clone with 32233-1-PBS in a different storage buffer formulation.